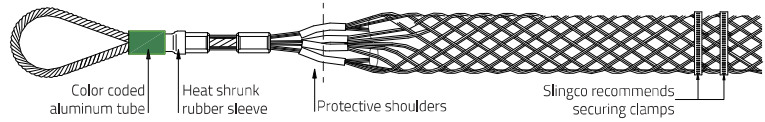


A TYPE - HIGH STRENGTH CABLE GRIP



The strongest grip we produce; can be used for metal wire and synthetic rope pulls. Perfect for overhead transmission and distribution line pulling or any applications with heavy load ratings, e.g. gas, electric railroad, rigging lines and construction pulls. When pulling synthetic rope use a Slingco Feed Tube (see below) to make rope insertion a breeze. To avoid the effects of torsion a line pulling swivel that rotates under load should be used. Galvanised Steel and colour coded for ease of identification.



Slingco Part No.	Colour Code	Rope Diameter		Conductor Diameter		Overall Length		Lattice Length		Approx. Break Load	
		in	mm	in	mm	in	mm	in	mm	lb	kg
ZCS1799	Black	0.25 - 0.65	6 - 16	0.19 - 0.40	5 - 10	38	965	28	710	7,000	3,180
ZCS3020	Purple	0.30 - 0.40	7.5 - 10	0.25 - 0.40	6 - 10	42	1,067	30	760	10,000	4,530
ZCS1800	Dark Green	0.50 - 0.90	13 - 23	0.38 - 0.63	9.7 - 16	51	1,300	37	940	14,000	6,360
ZCS3522	Grey	0.44 - 0.90	11 - 23	0.44 - 0.63	11 - 16	110	2,800	97	2,470	20,000	9,072
ZCS1801	Red	0.75 - 1.10	19 - 28	0.63 - 0.88	16 - 22	74	1,880	58	1,473	20,000	9,072
ZCS5543	Brown			0.75 - 1.10	19 - 28	81	2,060	62	1,579	30,700	13,925
ZCS1802	Blue	1.00 - 1.50	25 - 38	0.88 - 1.13	22 - 29	80	2,032	61	1,549	30,700	13,955
ZCS1803	Yellow	1.25 - 1.70	32 - 43	1.13 - 1.38	29 - 35	112	2,845	90	2,299	47,000	21,360
ZCS1804	Aluminium	1.50 - 2.10	38 - 53	1.38 - 1.90	35 - 50	119	3,020	92	2,336	67,000	30,455
ZCS6712	-			2.00 - 2.60	50.8 - 66	109.25	2,775	100	2,557	70,528	32,000
ZCS7852	-			2.50 - 3.00	63.5 - 76	109.25	2,775	100	2,557	70,528	32,000

FEED TUBE

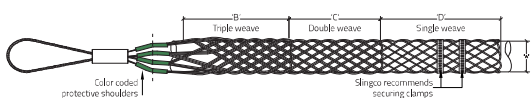
Due to the tight construction of the A Type cable grip, we recommend using the Slingco Feed Tube when inserting cable or rope into the grips. For ease of use, our feed tubes are colour-coded to match the A Type Cable grip.



Slingco Part No.	Tube to fit rope diameter		Feed tube length		Matches Slingco cable grip part no.	Cable grip colour
	in	mm	in	mm		
FTU1890	0.25 - 0.65	6 - 16	28	713	ZCS1799	Black
FTU1891	0.50 - 0.90	13 - 23	40	1,018	ZCS1800	Dark Green
FTU1892	0.75 - 1.10	19 - 28	52	1,324	ZCS1801	Red
FTU1893	1.00 - 1.50	25 - 38	67	1,706	ZCS1802	Dark Blue
FTU1894	1.25 - 1.70	32 - 43	83	2,113	ZCS1803	Yellow
FTU1895	1.50 - 2.10	38 - 53	96	2,444	ZCS1804	Aluminium

MU TYPE - HIGH STRENGTH CABLE GRIP

This grip's triple weave construction is ideal for heavy loads. MU cable grips are colour coded for ease of identification. Perfect for stringing overhead transmission and distribution lines and heavy-load pulls of any kind. Use with bare or insulated cable, conductor or wire. The flexible eye connects with Slingco line pulling swivels for trouble free pulling applications. Made of Galvanised Steel.



Slingco Part No.	Colour Code	Range		Lattice Length		Approx. Break Load	
		in	mm	in	mm	lb	kg
ZCS1710	Dark Green	0.25 - 0.50	6-12	31	787	7,000	3,170
ZCS1711	Brown	0.50 - 0.75	12-19	45	1,143	10,500	4,760
ZCS1712	Light Blue	0.75 - 1.00	19-25	43	1,092	14,100	6,395
ZCS1713	Gold	1.00 - 1.25	25-32	65	1,651	25,000	11,340
ZCS1714	Black	1.25 - 1.50	32-38	59	1,499	31,000	14,065
ZCS1715	Red	1.50 - 1.75	38-44	82	2,083	31,000	14,065
ZCS1716	Dark Blue	1.75 - 2.25	44-57	82	2,083	49,000	22,230
ZCS1750	Yellow	2.00 - 2.50	51-63	72	1,829	49,000	22,230
ZCS1751	Orange	2.50 - 3.00	63-76	72	1,829	49,000	22,230
ZCS1752	Aluminium	3.00 - 3.50	76-89	74	1,880	49,000	22,230
ZCS1753	Light Green	3.50 - 4.00	89-102	76	1,930	49,000	22,230

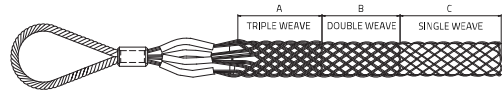
The HD, MD and LD type form a range of conductor grips that are quick and easy to attach and remove, in sizes from 8mm to 48mm, with MBL up to 24,000kgs and WLL 8,000kg. They are suitable for all common conductors, e.g. Horse, Lynx, Upas, Zebra and Araucaria plus earth wires OPGW. The flexible eye connects with Slingco line pulling swivels for trouble-free pulling applications. Made of galvanised steel.

HD TYPE - HEAVY DUTY PULLING GRIPS (COLOUR CODED)



HD
275kV - 400kV

Slingco Part No.	Colour Code	Range		Lattice Length		Min. Break Load		WLL 3:1	
		in	mm	in	mm	lb	kg	lb	kg
ZCS7042	Green	0.47 - 0.75	12 - 19	54	1,372	18,739	8,500	6,246	2,833
ZCS6580	Red	0.75 - 0.98	19 - 25	54.36	1,379	29,762	13,500	9,921	4,500
ZCS6413	Blue	0.98 - 1.26	25 - 32	70.70	1,795	33,069	15,000	11,023	5,000
ZCS6414	Gold	1.26 - 1.50	32 - 38	71.10	1,807	39,683	18,000	13,228	6,000
ZCS10164	Black	1.50 - 1.89	38 - 48	73.80	1,838	48,501	24,000	16,167	8,000

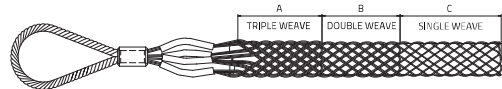


HD TYPE - HEAVY DUTY PULLING GRIPS (NON COLOUR CODED)



HD
275kV - 400kV

Slingco Part No.	Range		Lattice Length		Min. Break Load		WLL 3:1	
	in	mm	in	mm	lb	kg	lb	kg
ZCS10368	0.47 - 0.75	12 - 19	54	1372	18,739	8,500	6,246	2,833
ZCS10369	0.75 - 0.98	19 - 25	54.36	1379	29,762	13,500	9,921	4,500
ZCS10370	0.98 - 1.26	25 - 32	70.7	1795	33,069	15,000	11,023	5,000
ZCS10371	1.26 - 1.50	32 - 38	71.1	1807	39,683	18,000	13,228	6,000
ZCS10372	1.50 - 1.89	38 - 48	73.8	1838	48,501	24,000	16,167	8,000

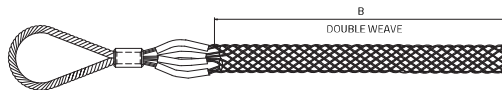


MD TYPE - MEDIUM DUTY PULLING GRIP

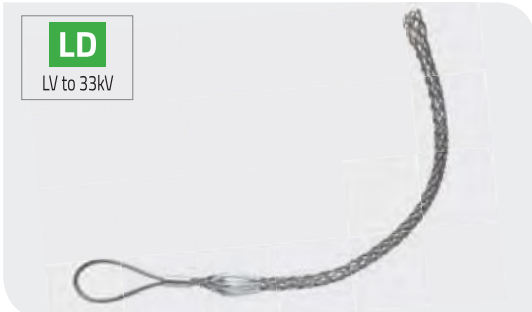


MD
132kV

Slingco Part No.	Colour Code	Range		Lattice Length		Min. Break Load		WLL 3:1	
		in	mm	in	mm	lb	kg	lb	kg
ZCS7229	Green	0.31 - 0.51	8 - 13	24	610	4,960	2,250	1,653	750
ZCS7230	Brown	0.47 - 0.75	12 - 19	24	610	7,452	3,380	2,484	1,127
ZCS7231	Light Blue	0.75 - 0.98	19 - 25	24	610	12,214	5,540	4,071	1,847
ZCS7232	Gold	0.98 - 1.26	25 - 32	24	610	21,054	9,550	7,018	3,183

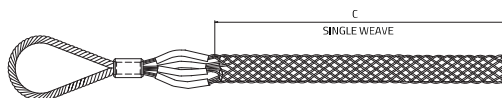


LD TYPE - LIGHT DUTY PULLING GRIP



LD
LV to 33kV

Slingco Part No.	Colour Code	Range		Lattice Length		Min. Break Load		WLL 3:1	
		in	mm	in	mm	lb	kg	lb	kg
ZCS7233	Green	0.40 - 0.51	10 - 13	24	610	2,469	1,120	823	373
ZCS7234	Brown	0.51 - 0.75	13 - 19	24	610	3,704	1,680	1,235	560
ZCS7235	Light Blue	0.75 - 0.98	19 - 25	24	610	4,938	2,240	1,646	747
ZCS7236	Gold	0.98 - 1.50	25 - 38	24	610	9,877	4,480	3,292	1,493



DE TYPE - DOUBLE EYE GRIP



Ideal for pulling light to medium loads; the main advantage over the single eye cable grip is the cable being pulled can be passed through the grip, several cable grips can be used to support over a calculated distance.

Slingco Part No.	Range		Lattice Weave	Lattice Length		Overall Length		Approx. Break Load	
	in	mm		in	mm	in	mm	lb	kg
DOUBLE EYE STANDARD GRIP - GALVANISED									
ZCS0305	0.25 - 0.50	6 - 13	Single	9	230	12	305	1,680	760
ZCS0306	0.50 - 0.75	13 - 19	Single	14	355	17	430	2,240	1,015
ZCS0307	0.75 - 1.00	19 - 25	Single	16	405	20	510	5,600	2,540
ZCS0308	1.00 - 1.50	25 - 38	Single	18	455	24	610	7,840	3,555
ZCS0309	1.50 - 2.00	38 - 50	Double	21	535	29	735	11,200	5,080
ZCS0310	2.00 - 2.50	50 - 63	Double	24	610	34	865	11,200	5,080
ZCS0311	2.50 - 3.50	63 - 89	Double	27	685	39	990	13,440	6,095
ZCS0312	3.50 - 4.50	89 - 115	Double	27	685	39	990	15,680	7,110
ZCS0878	4.50 - 5.50	115 - 140	Double	27	685	39	990	15,680	7,110
ZCS3579	5.31 - 6.30	135 - 160	Double	39.37	1,000	63	1,600	44,800	20,000
ZCS3580	6.33 - 7.48	161 - 190	Double	59.05	1,500	82.67	2,100	60,480	27,000
ZCS3581	7.51 - 8.66	191 - 220	Double	59.05	1,500	82.67	2,100	60,480	27,000
ZCS3582	8.70 - 9.84	221 - 250	Double	59.05	1,500	82.67	2,100	60,480	27,000
DOUBLE EYE STANDARD GRIP - 316 STAINLESS STEEL									
ZCS0823	0.25 - 0.50	6 - 13	Single	9	230	12	305	1,344	610
ZCS1007	0.50 - 0.75	13 - 19	Single	14	355	17	430	1,792	810
ZCS0931	0.75 - 1.00	19 - 25	Single	16	405	20	510	4,480	2,030
ZCS1265	1.00 - 1.50	25 - 38	Single	18	455	24	610	6,272	2,845
ZCS3995	1.14 - 1.57	29 - 40	Double	50	1,270	62	1,575	35,000	15,625
ZCS1252	1.50 - 2.00	38 - 50	Double	21	535	29	735	8,960	4,065
ZCS0319	2.00 - 2.50	50 - 63	Double	24	610	34	865	8,960	4,065
ZCS0213	2.50 - 3.50	63 - 89	Double	27	685	39	990	10,752	4,875
ZCS4873	2.50 - 3.50	63 - 89	Double	70	1,778	80	2,032	13,500	6,027
ZCS4596	2.50 - 3.50	63 - 89	Triple	56	1,422	152	3,860	16,138	7,204
ZCS0332	3.50 - 4.50	89 - 115	Double	27	685	39	990	12,544	5,690
ZCS1982	4.50 - 5.50	115 - 140	Double	27	685	39	990	12,544	5,690
ZCS4869	4.50 - 5.50	115 - 140	Double	70	1,778	80	2,032	13,500	6,027

OS TYPE - OFFSET EYE GRIP



Similar to the SE Type single eye cable grip, but for when offset positioning is required. Excellent for pulling slack out of lines that have been pulled. May also be used for removing underground cables when end of cable is available.

Slingco Part No.	Range		Lattice Weave	Lattice Length		Overall Length		Approx. Break Load	
	in	mm		in	mm	in	mm	lb	kg
OFFSET EYE STANDARD GRIP - GALVANISED									
ZCS1860	0.25 - 0.50	6 - 13	Single	9	230	12	305	1,680	760
ZCS1861	0.50 - 0.75	13 - 19	Single	14	355	17	430	2,240	1015
ZCS1862	0.75 - 1.00	19 - 25	Single	16	405	20	510	5,600	2540
ZCS1863	1.00 - 1.50	25 - 38	Single	18	455	24	610	7,837	3555
ZCS1864	1.50 - 2.00	38 - 50	Double	21	535	29	735	11,200	5080
ZCS1865	2.00 - 2.50	50 - 63	Double	24	610	34	865	11,200	5080
ZCS1866	2.50 - 3.50	63 - 89	Double	27	685	39	990	13,440	6095
ZCS1867	3.50 - 4.50	89 - 115	Double	27	685	39	990	15,680	7110
ZCS1974	4.50 - 5.50	115 - 140	Double	27	685	39	990	15,680	7110
OFFSET EYE STANDARD GRIP - 316 STAINLESS STEEL									
ZCS1986	0.25 - 0.50	6 - 13	Single	9	230	12	305	1,344	610
ZCS1987	0.50 - 0.75	13 - 19	Single	14	355	17	430	1,792	810
ZCS1988	0.75 - 1.00	19 - 25	Single	16	405	20	510	4,480	2,030
ZCS1989	1.00 - 1.50	25 - 38	Single	18	455	24	610	6,272	2,845
ZCS1990	1.50 - 2.00	38 - 50	Double	21	535	29	735	8,960	4065
ZCS1991	2.00 - 2.50	50 - 63	Double	24	610	34	865	8,960	4,065
ZCS1992	2.50 - 3.50	63 - 89	Double	27	685	39	990	10,752	4,875
ZCS1993	3.50 - 4.50	89 - 115	Double	27	685	39	990	12,544	5,690
ZCS1994	4.50 - 5.50	115 - 140	Double	27	685	39	990	12,544	5,690
ZCS3994	5.50 - 7.0	140 - 180	Double	23.5	596	38.4	976	4,500	2,041
ZCS4069	8.0 - 9.0	203 - 229	Double	59	1,500	74	1,880	20,000	8,928

LU TYPE - LACE UP GRIP



Ideal for pulling light to medium loads; the LU-type is fitted to the cable being pulled by stitching it together, like a football. Mainly used where a 'typical' cable grip can't be fitted over a connector at the end of a cable. For use in pulling when the end is not accessible. The LU Type is wrapped around the cable, then closed with the wire lace provided. See Lace Up instructions on page 51.

Slingco Part No.	Range		Lattice Weave	Lattice Length		Overall Length		Approx. Break Load	
	in	mm		in	mm	in	mm	lb	kg
LACE UP STANDARD GRIP - GALVANISED									
ZCS1157	0.25 - 0.50	6 - 13	Single	8	230	17	305	1,680	760
ZCS0872	0.50 - 0.75	13 - 19	Single	17	355	22	430	2,240	1,015
ZCS0871	0.75 - 1.00	19 - 25	Single	14.5	405	19	510	5,600	2,540
ZCS0328	1.00 - 1.50	25 - 38	Single	15	455	22	610	6,000	2,722
ZCS0329	1.50 - 2.00	38 - 50	Double	27	535	36	735	11,200	5,080
ZCS0330	2.00 - 2.50	50 - 63	Double	26	610	36	865	11,200	5,080
ZCS0331	2.50 - 3.50	63 - 89	Double	22	685	31	990	13,440	6,095
ZCS0853	3.50 - 4.50	89 - 115	Double	27	685	39	990	15,680	7,110
ZCS1109	4.50 - 5.50	115 - 140	Double	27	685	39	990	15,680	7,110
ZCS4463	4.72 - 5.90	120 - 150	Triple	59	1,500	102	2600	32,928	14,700
ZCS3584	5.31 - 6.30	135 - 160	Double	39	1,000	63	1,600	38,080	17,000
ZCS3585	6.33 - 7.48	161 - 190	Double	59	1,500	83	2,100	38,080	17,000
ZCS3586	7.51 - 8.66	191 - 220	Double	59	1,500	83	2,100	38,080	17,000
ZCS3270	7.90 - 8.66	200 - 250	Triple	78.75	2,280	102	2,732	70,548	32,000
ZCS3587	8.70 - 9.84	221 - 250	Double	59	1,500	83	2,100	38,080	17,000
ZCS3588	9.88 - 11.81	251 - 300	Double	79	2,000	106	2,700	38,080	17,000
LACE UP STANDARD GRIP - 316 STAINLESS STEEL									
ZCS1983	0.25 - 0.50	6 - 13	Single	9	230	12	305	1,344	610
ZCS1796	0.50 - 0.75	13 - 19	Single	14	355	17	430	1,792	810
ZCS1789	0.75 - 1.00	19 - 25	Single	16	405	20	510	4,480	2,030
ZCS1797	1.00 - 1.50	25 - 38	Single	18	455	24	610	6,272	2,845
ZCS1984	1.50 - 2.00	38 - 50	Double	21	535	29	735	8,960	4,065
ZCS2466	2.00 - 2.50	50 - 63	Double	24	610	34	865	8,960	4,065
ZCS0816	2.50 - 3.50	63 - 89	Double	27	685	39	990	10,752	4,875
ZCS5094	2.75 - 3.44	69 - 87	Multiple	55	1,390	81	2,063	40,000	17,857
ZCS1356	3.50 - 4.50	89 - 115	Double	27	685	39	990	12,544	5,690
ZCS2832	3.50 - 4.50	89 - 115	Triple	27	685	39	990	14,012	6,300
ZCS1355	4.50 - 5.50	115 - 140	Double	27	685	39	990	12,544	5,690
ZCS2833	4.50 - 5.50	115 - 140	Triple	27	685	39	990	16,128	7,315

ST TYPE - SINGLE EYE DOUBLE WEAVE GRIP



This Slingco grip features a double weave construction for medium to heavy pulling applications in underground installations.

Slingco Part No.	Range		Lattice Length		Approx. Break Load	
	in	mm	in	mm	lb	kg
SHORT LENGTH - GALVANISED STEEL						
ZCS2511	0.50 - 0.62	13 - 16	21	534	4,500	2,040
ZCS2512	0.62 - 0.75	16 - 19	24	610	5,600	2,540
ZCS2513	0.75 - 1.00	19 - 25	24	610	6,800	3,085
ZCS2514	1.00 - 1.50	25 - 38	24	610	9,600	4,355
ZCS2515	1.50 - 2.00	38 - 50	24	610	16,400	7,441
ZCS2516	2.00 - 2.50	50 - 63	24	610	18,500	8,390
ZCS2517	2.50 - 3.00	63 - 76	24	610	24,500	11,115
ZCS2518	3.00 - 3.50	76 - 89	24	610	24,500	11,115
ZCS2519	3.50 - 4.00	89 - 102	26	660	31,000	14,065
LONGER LENGTH - GALVANISED STEEL						
ZCS2520	0.75 - 1.00	19 - 25	36	914	6,800	3,085
ZCS2521	1.00 - 1.50	25 - 38	36	914	9,600	4,355
ZCS2522	1.50 - 2.00	38 - 50	36	914	16,400	7,440
ZCS2523	2.00 - 2.50	50 - 63	36	914	18,500	8,390
ZCS2524	2.50 - 3.00	63 - 76	36	914	24,500	11,115
ZCS2777	3.00 - 3.50	76 - 89	36	914	24,500	11,115
ZCS2778	3.50 - 4.00	89 - 102	40	1,010	31,000	14,065

FLEXIBLE & THIMBLE EYE GRIP - SINGLE EYE



Designed to fit the typical European range of cables, and with a longer lattice length, these grips are ideal for pulling medium to heavy loads. Made of galvanised steel, this grip has a flexible eye construction – and is also available with a reinforced thimble eye.



Flexible Eye	Thimble Eye	Type	Range		Lattice Length		Overall Length		Approx. Break Load	
			in	mm	in	mm	in	mm	lb	kg
ZCS0824	ZCS3133	Single	0.59 - 0.79	15 - 20	48	1,220	53.5	1,358	2,730	1,240
ZCS0825	ZCS3134	Single	0.79 - 1.18	20 - 30	49	1,250	53.5	1,358	3,370	1,530
ZCS0826	ZCS3135	Double	0.79 - 1.18	20 - 30	49	1,250	55	1,393	4,380	1,990
ZCS0827	ZCS3136	Single	1.18 - 1.57	30 - 40	49	1,250	55	1,393	5,620	2,550
ZCS0828	ZCS3137	Double	1.18 - 1.57	30 - 40	49	1,250	65	1,652	6,740	3,060
ZCS0829	ZCS3138	Double	1.57 - 1.97	40 - 50	59	1,500	65.5	1,661	13,060	5,930
ZCS0830	ZCS3139	Double	1.97 - 2.36	50 - 60	59	1,500	69	1,750	14,610	6,630
ZCS0831	ZCS3140	Double	2.36 - 2.75	60 - 70	59	1,500	69	1,750	17,160	7,790
ZCS0832	ZCS3141	Double	2.75 - 3.54	70 - 90	59	1,500	69	1,750	17,870	8,110
ZCS0833	ZCS3142	Double	3.54 - 4.33	90 - 110	59	1,500	69	1,750	26,070	11,830
ZCS0834	ZCS3143	Double	4.33 - 5.12	110 - 130	59	1,500	69	1,750	26,070	11,830
ZCS0835	ZCS3144	Double	4.72 - 5.90	120 - 150	59	1,500	69	1,750	28,100	12,750
ZCS0836	ZCS3145	Double	5.51 - 7.09	140 - 180	59	1,500	69	1,750	28,100	12,750

Slingco Part No.	Range		Lattice Length		Approx. Break Load	
	in	mm	in	mm	lb	kg
SHORTER LENGTH						
ZCS4783	2.36 - 2.75	60 - 70	43	1,096	17,450	7,790
ZCS4784	2.75 - 3.54	70 - 90	43	1,096	18,166	8,110
ZCS4785	3.54 - 4.33	90 - 110	43	1,096	26,500	11,830
ZCS4786	4.33 - 5.11	110 - 130	43	1,096	26,500	11,830
ZCS4787	4.72 - 5.90	120 - 150	43	1,096	28,560	12,750

FLEXIBLE & THIMBLE EYE GRIP - DOUBLE EYE



Flexible Eye	Thimble Eye	Type	Range		Lattice Length		Overall Length		Approx. Break Load	
			in	mm	in	mm	in	mm	lb	kg
ZCS0837	ZCS3146	Single	0.59 - 0.79	15 - 20	49	1,250	59	1,500	2,730	1,240
ZCS0838	ZCS3147	Single	0.79 - 1.18	20 - 30	49	1,250	59	1,500	3,370	1,530
ZCS0839	ZCS3148	Double	0.79 - 1.18	20 - 30	49	1,250	59	1,500	4,380	1,990
ZCS0840	ZCS3149	Single	1.18 - 1.57	30 - 40	49	1,250	59	1,500	5,620	2,550
ZCS0841	ZCS3150	Double	1.18 - 1.57	30 - 40	49	1,250	59	1,500	6,740	3,060
ZCS0842	ZCS3151	Double	1.57 - 1.97	40 - 50	59	1,500	69	1,750	13,060	5,930
ZCS0843	ZCS3152	Double	1.97 - 2.36	50 - 60	59	1,500	69	1,750	14,610	6,630
ZCS0844	ZCS3153	Double	2.36 - 2.76	60 - 70	59	1,500	69	1,750	17,160	7,790
ZCS0845	ZCS3154	Double	2.76 - 3.54	70 - 90	59	1,500	69	1,750	17,870	8,110
ZCS0847	ZCS3155	Double	3.54 - 4.33	90 - 110	59	1,500	69	1,750	26,070	11,830
ZCS0848	ZCS3156	Double	4.33 - 5.12	110 - 130	59	1,500	69	1,750	26,070	11,830
ZCS0849	ZCS3157	Double	4.72 - 5.91	120 - 150	59	1,500	69	1,750	28,100	12,750
ZCS0850	ZCS3158	Double	5.51 - 7.09	140 - 180	59	1,500	69	1,750	28,100	12,750

This grip has a double eye construction allowing the cables being pulled to pass through the grip. Available with flexible eye or reinforced thimble eye.

JUNIOR TYPE CABLE GRIP

LIGHT DUTY



Slingco Part No	Range		Lattice Length		Eye Length		Approx. Break Load	
	in	mm	in	mm	in	mm	lb	kg
ZCS8562	0.25 - 0.36	6.4 - 9.1	7.5	190.5	2.5	63.5	450	204
ZCS8563	0.37 - 0.49	9.4 - 12.4	11	279.4	3	76.2	900	408
ZCS8564	0.50 - 0.61	12.7 - 15.5	12.5	317.5	3	76.2	1,300	589
ZCS8643	0.50 - 0.75	15.7 - 19.0	16.5	419.1	4.5	114.3	2,240	884
ZCS8565	0.62 - 0.74	12.7 - 19.0	16.5	419.1	4.5	114.3	1,950	1,016
ZCS8566	0.75 - 0.99	19.1 - 25.1	17	431.8	4	101.6	2,800	1,270
ZCS8567	1.0 - 1.25	25.1 - 31.5	17.5	444.5	4.5	114.3	3,900	1,769

SE TYPE - SINGLE EYE GRIP



Ideal for pulling light to medium loads; typical application - 'standard pull' of single or group of cables, where additional support is unnecessary, or if used in conjunction with other cable grips.

Slingco Part No.	Range		Lattice Weave	Lattice length		Overall Length		Approx. Break Load	
	in	mm		in	mm	in	mm	lb	kg
SINGLE EYE STANDARD GRIP - GALVANISED									
ZCS0320	0.25 - 0.50	6 - 13	Single	9	230	12	305	1,680	760
ZCS0321	0.50 - 0.75	13 - 19	Single	14	355	17	430	2,240	1,015
ZCS0322	0.75 - 1.00	19 - 25	Single	16	405	20	510	5,600	2,540
ZCS0323	1.00 - 1.50	25 - 38	Single	18	455	24	610	7,840	3,555
ZCS0324	1.50 - 2.00	38 - 50	Double	21	535	29	735	11,200	5,080
ZCS0325	2.00 - 2.50	50 - 63	Double	24	610	34	865	11,200	5,080
ZCS0326	2.50 - 3.50	63 - 89	Double	27	685	39	990	13,440	6,095
ZCS0327	3.50 - 4.50	89 - 115	Double	27	685	39	990	15,680	7,110
ZCS0821	4.50 - 5.50	115 - 140	Double	27	685	39	990	15,680	7,110
ZCS3574	5.31 - 6.30	135 - 160	Double	36.9	900	49.8	1,380	44,000	20,000
ZCS3575	6.3 - 7.48	160 - 190	Double	57.2	1,500	78.7	2,000	44,000	20,000
ZCS3576	7.48 - 8.66	190 - 220	Double	61.9	1,500	81.6	2,000	44,000	20,000
ZCS3577	8.66 - 9.84	220 - 250	Double	59.7	1,500	72.7	2,000	44,000	20,000
ZCS3578	9.84 - 11.81	250 - 300	Single	80.0	2,000	93.3	2,600	44,000	20,000
SINGLE EYE STANDARD GRIP - 316 STAINLESS STEEL									
ZCS1380	0.25 - 0.50	6 - 13	Single	9	230	12	305	1,344	610
ZCS1523	0.50 - 0.75	13 - 19	Single	14	355	17	430	1,792	810
ZCS1373	0.75 - 1.00	19 - 25	Single	16	405	20	510	4,480	2,030
ZCS1952	1.00 - 1.50	25 - 38	Single	18	455	24	610	6,272	2,845
ZCS1381	1.50 - 2.00	38 - 50	Double	21	535	29	735	8,960	4,065
ZCS1977	2.00 - 2.50	50 - 63	Double	24	610	34	865	8,960	4,065
ZCS1979	2.50 - 3.50	63 - 89	Double	27	685	39	990	10,752	4,875
ZCS1980	3.50 - 4.50	89 - 115	Double	27	685	39	990	12,544	5,690
ZCS1981	4.50 - 5.50	115 - 140	Double	27	685	39	990	12,544	5,690

SINGLE EYE DOUBLE WEAVE PULLING GRIP



Flex eye general duty pulling grips. Made of galvanised wire these grips in 600 mm and 900 mm lengths are perfect for general light to medium duty pulling applications.

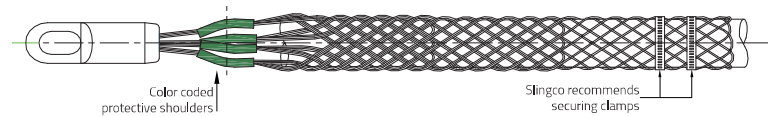
Slingco Part No.	Range		Lattice Weave	Lattice Length		Overall Length		Approx. Break Load	
	in	mm		in	mm	in	mm	lb	kg
600 mm SERIES									
ZCS12627	0.25-0.38	6 - 10	Double	23.6	600	34.9	886	3,316	1,504
ZCS12628	0.38-0.79	10 - 20	Double	23.6	600	34.9	886	4,101	1,860
ZCS12629	0.79-1.18	20 - 30	Double	23.6	600	34.9	886	4,974	2,256
ZCS12630	1.18-1.57	30 - 40	Double	23.6	600	34.9	886	8,148	3,696
ZCS12631	1.57-1.97	40 - 50	Double	23.6	600	35.2	895	12,103	5,490
ZCS12632	1.97-2.5	50 - 65	Double	23.6	600	35.2	895	12,103	5,490
ZCS12633	2.5-3.15	65 - 80	Double	23.6	600	35.2	895	16,138	7,320
ZCS12634	3.15-3.75	80 - 95	Double	23.6	600	35.2	895	16,138	7,320
ZCS12635	3.75-4.33	95 - 110	Double	23.6	600	35.2	895	23,398	10,613
ZCS12636	4.33-5.12	110 - 130	Double	23.6	600	35.2	895	23,398	10,613
ZCS12637	5.12-5.91	130 - 150	Double	23.6	600	35.2	904	23,398	10,613
900 mm SERIES									
ZCS12638	0.25-0.38	6 - 10	Double	35.4	900	46.7	1,186	3,316	1,504
ZCS12639	0.38-0.79	10 - 20	Double	35.4	900	46.7	1,186	4,101	1,860
ZCS12640	0.79-1.18	20 - 30	Double	35.4	900	46.7	1,186	4,974	2,256
ZCS12641	1.18-1.57	30 - 40	Double	35.4	900	46.7	1,186	8,148	3,696
ZCS12642	1.57-1.97	40 - 50	Double	35.4	900	47.04	1,195	12,103	5,490
ZCS12643	1.97-2.5	50 - 65	Double	35.4	900	47.04	1,195	12,103	5,490
ZCS12644	2.5-3.15	65 - 80	Double	35.4	900	47.04	1,195	16,138	7,320
ZCS12645	3.15-3.75	80 - 95	Double	35.4	900	47.04	1,195	16,138	7,320
ZCS12646	3.75-4.33	95 - 110	Double	35.4	900	47.04	1,195	23,398	10,613
ZCS12647	4.33-5.12	110 - 130	Double	35.4	900	47.04	1,195	23,398	10,613
ZCS12648	5.12-5.91	130 - 150	Double	35.4	900	47.04	1,204	23,398	10,613
ZCS12649	5.91-7.0	150 - 180	Double	35.4	900	48.1	1,223	28,078	12,736

R TYPE - ROTATING MULTI-WEAVE GRIP

Like the MU type, the rotating eye grip has a triple weave construction and is colour coded for ease of identification. The steel forged revolving head is ideal for connecting to Slingco swivels. Warning: The Slingco rotating eye does not revolve under load and does not replace the use of a line swivel. Please see page 29 for swivel and grip match-up and safety and technical information. Made of galvanised steel.



Slingco Part No.	Range		Lattice Length		Approx. Break Load		Colour Code
	in	mm	in	mm	lb	kg	
ZCS2177	0.25 - 0.50	6 - 12	28	720	7,000	3,175	Dark Green
ZCS2178	0.50 - 0.75	12 - 19	39	978	10,500	4,760	Brown
ZCS2179	0.75 - 1.00	19 - 25	47	1,199	14,100	6,395	Light Blue
ZCS2180	1.00 - 1.25	25 - 32	60	1,529	25,000	11,340	Gold
ZCS2181	1.25 - 1.50	32 - 38	51	1,289	31,000	14,061	Black
ZCS2182	1.50 - 1.75	38 - 44	73	1,860	31,000	14,061	Red
ZCS2183	1.75 - 2.25	44 - 57	69	1,747	43,000	19,505	Dark blue
ZCS2779	2.00 - 2.50	51 - 63	54	1,370	43,000	19,505	Yellow
ZCS2780	2.50 - 3.00	63 - 76	52	1,311	43,000	19,505	Orange
ZCS2781	3.00 - 3.50	76 - 89	53	1,342	43,000	19,505	Aluminium
ZCS2782	3.50 - 4.00	89 - 102	54	1,351	43,000	19,505	Light Green



RT TYPE - ROTATING EYE DOUBLE WEAVE GRIP



Slingco Part No.	Range		Lattice Length		Approx. Break Load	
	in	mm	in	mm	lb	kg
SHORT LENGTH - GALVANISED STEEL						
ZCS2734	0.50 - 0.62	13 - 16	14	347	5,600	2,540
ZCS2735	0.62 - 0.75	16 - 19	13	327	6,800	3,084
ZCS2736	0.75 - 1.00	19 - 25	19	475	6,800	3,084
ZCS2738	1.00 - 1.50	25 - 38	20.5	519	12,800	5,806
ZCS2739	1.50 - 2.00	38 - 50	22	552	16,400	7,440
ZCS2740	2.00 - 2.50	50 - 63	23	587	27,200	12,338
ZCS2741	2.50 - 3.00	63 - 76	25	642	33,000	14,969
ZCS2742	3.00 - 3.50	76 - 89	29	731	41,000	19,504
ZCS2743	3.50 - 4.00	89 - 102	32	804	43,000	19,504
ZCS2744	4.00 - 4.50	102 - 115	33	826	43,000	19,504
STANDARD - LONGER LENGTH - GALVANISED STEEL						
ZCS2745	0.50 - 0.62	13 - 16	18	467	5,600	2,540
ZCS2746	0.62 - 0.75	16 - 19	17	436	6,800	3,084
ZCS2747	0.75 - 1.00	19 - 25	30	765	6,800	3,084
ZCS2748	1.00 - 1.50	25 - 38	34	869	12,800	5,806
ZCS2749	1.50 - 2.00	38 - 50	30	747	16,400	7,439
ZCS2750	2.00 - 2.50	50 - 63	30	740	27,200	12,338
ZCS2751	2.50 - 3.00	63 - 76	35	893	33,000	14,969
ZCS2752	3.00 - 3.50	76 - 89	35	866	41,000	18,597
ZCS2753	3.50 - 4.00	89 - 102	42	1,058	43,000	19,504
ZCS2754	4.00 - 4.50	102 - 115	42	1,048	43,000	19,504
ZCS2755	4.50 - 5.00	115 - 127	53	1,350	43,000	19,504
ZCS2756	5.00 - 6.00	127 - 153	54	1,361	43,000	19,504
ZCS2757	6.00 - 7.00	153 - 178	62	1,563	43,000	19,504

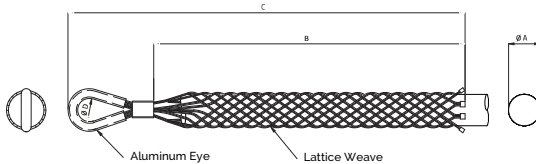
Double weave construction for medium to heavy pulling applications in underground installations. Additionally its steel forged revolving head is ideal for connecting to Slingco swivels. Warning: The Slingco RT Type Rotating Eye Grip does not revolve under load. The rotating eye does not replace the need for a swivel. Please see page 29 for swivel and grip match-up and safety and technical information.

REINFORCED EYE UNDERGROUND GRIPS



This line of grips are specially designed for underground applications. The eye is enclosed in an aluminium tube which provides added support when running within conduit and trenches. Plus these underground pulling grips are made from coated airline wire for added strength and flexibility.

Now with expanded range capacity use one grip for a wider range of diameters. Plus the expanded range allows for easier installation on conductor or any cylindrical object. As with all pulling applications Slingco strongly recommends banding. See grip installation instructions on page 50.



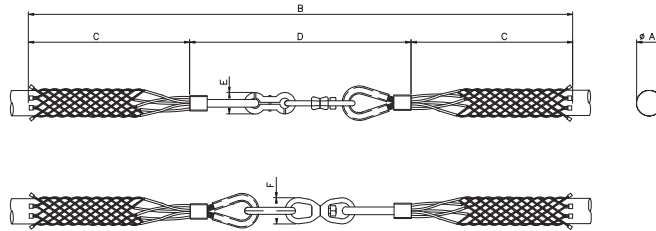
Slingco part no.	Ø A nominal in (mm)	Range	Lattice Weave	B in (mm)	C in (mm)	Ø D Eye in (mm)	Approx. Break Load lb (kg)
SINGLE EYE SINGLE / DOUBLE WEAVE PVC COATED GALVANISED - 0.25 - 0.50" (6 - 13mm)							
ZCS6355	0.37 (9.5)	0.25-0.5 (6-13)	Single	18 (457)	21.75 (552)	0.70 (18)	1,500 (680)
ZCS6356	0.37 (9.5)	0.25-0.5 (6-13)	Single	24 (610)	27.75 (705)	0.70 (18)	1,500 (680)
ZCS6357	0.37 (9.5)	0.25-0.5 (6-13)	Double (uncoated)	18 (457)	21.75 (552)	0.70 (18)	3,500 (1,588)
ZCS6358	0.37 (9.5)	0.25-0.5 (6-13)	Double (uncoated)	24 (610)	27.75 (705)	0.70 (18)	3,500 (1,588)
SINGLE EYE SINGLE / DOUBLE / TRIPLE WEAVE PVC COATED GALVANISED - 0.50 - 0.75" (13 - 19MM)							
ZCS6359	0.63 (16)	0.50-0.75 (13-19)	Single	18 (457)	21.75 (552)	0.70 (18)	1,500 (680)
ZCS6360	0.63 (16)	0.50-0.75 (13-19)	Single	24 (610)	27.75 (705)	0.70 (18)	1,500 (680)
ZCS6361	0.63 (16)	0.50-0.75 (13-19)	Double (uncoated)	18 (457)	21.75 (552)	0.70 (18)	4,000 (1,814)
ZCS6362	0.63 (16)	0.50-0.75 (13-19)	Double (uncoated)	24 (610)	27.75 (705)	0.70 (18)	4,000 (1,814)
ZCS6363	0.63 (16)	0.50-0.75 (13-19)	Triple	12 (305)	17 (432)	0.87 (22)	5,200 (2,359)
ZCS6364	0.63 (16)	0.50-0.75 (13-19)	Triple	18 (457)	23 (584)	0.87 (22)	5,200 (2,359)
ZCS6365	0.63 (16)	0.50-0.75 (13-19)	Triple	24 (610)	29 (737)	0.87 (22)	5,200 (2,359)
ZCS6366	0.63 (16)	0.50-0.75 (13-19)	Triple	36 (914)	41 (1,041)	0.87 (22)	5,200 (2,359)
SINGLE EYE SINGLE / DOUBLE / TRIPLE WEAVE PVC COATED GALVANISED - 0.75 - 1.25" (19-32MM)							
ZCS6367	1.0 (25)	0.75-1.25 (19-32)	Single	18 (457)	23 (584)	0.87 (22)	3,000 (1,361)
ZCS6368	1.0 (25)	0.75-1.25 (19-32)	Single	24 (610)	29 (737)	0.87 (22)	3,000 (1,361)
ZCS6369	1.0 (25)	0.75-1.25 (19-32)	Double	18 (457)	23 (584)	0.87 (22)	6,000 (2,722)
ZCS6370	1.0 (25)	0.75-1.25 (19-32)	Double	24 (610)	29 (737)	0.87 (22)	6,000 (2,722)
ZCS6371	1.0 (25)	0.75-1.25 (19-32)	Triple	18 (457)	23 (584)	0.87 (22)	7,500 (3,402)
ZCS6372	1.0 (25)	0.75-1.25 (19-32)	Triple	24 (610)	29 (737)	0.87 (22)	10,000 (4,537)
SINGLE EYE TRIPLE WEAVE PVC COATED GALVANISED - 1.25 - 4.88" (32 - 124MM)							
ZCS6373	1.61 (41)	1.25-2.0 (32-51)	Triple	26 (660)	31 (787)	1.42 (36)	7,500 (3,402)
ZCS6374	1.61 (41)	1.25-2.0 (32-51)	Triple	32 (813)	37 (940)	1.42 (36)	10,500 (4,764)
ZCS6375	2.37 (60)	2.0-2.75 (51-70)	Triple	32 (813)	37 (940)	1.91 (48.5)	10,500 (4,764)
ZCS6376	2.37 (60)	2.0-2.75 (51-70)	Triple	38 (965)	44.3 (1,125)	1.91 (48.5)	13,500 (6,125)
ZCS6377	3.12 (70)	2.75-3.5 (70-89)	Triple	38 (965)	44.3 (1,125)	1.91 (48.5)	13,500 (6,125)
ZCS6378	3.12 (70)	2.75-3.5 (70-89)	Triple	46 (1,168)	52.3 (1,328)	1.91 (48.5)	16,500 (7,486)
ZCS6379	3.87 (99)	3.5-4.25 (89-108)	Triple	46 (1,168)	52.3 (1,328)	1.91 (48.5)	16,500 (7,486)
ZCS6380	3.87 (99)	3.5-4.25 (89-108)	Triple	52 (1,321)	58.3 (1,481)	1.91 (48.5)	19,500 (8,847)
ZCS6381	4.56 (116)	4.25-4.87 (108-124)	Triple	52 (1,321)	58.3 (1,481)	1.91 (48.5)	18,000 (8,167)
ZCS6382	4.56 (116)	4.25-4.87 (108-124)	Triple	58 (1,473)	64.3 (1,633)	1.91 (48.5)	19,500 (8,847)

Lengths B and C when on nominal mandrel ØA +/- 5%

SPLICING GRIP - ROTATING SWIVEL LINK



Slingco Rotating Swivel Link Grips are perfect for stringing replacement wire and cable on equipment and in drilling or rigging systems. Not recommended for use in overhead stringing applications. Use the existing cable as a pull wire to string the replacement cable. These grips are available with differently sized grips for each side. Call for assistance in selecting the proper grip. Link opens for easy installation and adjustment. Made of galvanised steel.

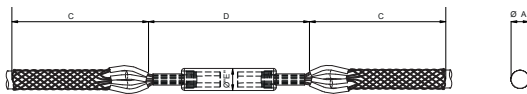


Slingco Part No.	Range		Ø A Nominal		B Length		C Length		D Length		E Length		F Length		Approx. Break Load	
	in	mm	in	mm	in	mm	in	mm	in	mm	in	mm	in	mm	lb	kg
ZCS3493	0.25 - 0.50	6 - 13	0.37	9.5	100.0	2,542	44.3	1,127	11.3	288	0.87	22	1.25	32	2,400	1,089
ZCS3494	0.50 - 1.00	13 - 25	0.75	19	103.2	2,621	45.7	1,160	11.8	301	1.38	35	1.25	32	3,526	1,599
ZCS3495	1.00 - 1.50	25 - 38	1.26	32	104.5	2,654	45.7	1,160	13.1	334	1.61	41	1.61	41	5,070	2,300
ZCS3496	1.50 - 2.00	38 - 51	1.75	44.5	105.2	2,673	45.7	1,160	13.9	353	1.61	41	2.0	51	8,000	3,629
ZCS3497	2.00 - 2.75	51 - 70	2.38	60.5	105.2	2,673	45.7	1,160	13.9	353	1.61	41	2.0	51	10,000	4,537
ZCS3498	2.75 - 3.50	70 - 90	3.15	80	105.2	2,673	45.7	1,160	13.9	353	1.61	41	2.0	51	10,000	4,537
ZCS3499	3.50 - 4.25	89 - 108	3.88	98.5	108.4	2,753	45.7	1,200	13.9	353	1.61	41	2.0	51	10,000	4,537

SPLICING GRIP - ROTATING BARREL



Slingco Rotating Barrel Swivel grips have a high capacity swivel that travels smoothly when being strung in straight line pulling.

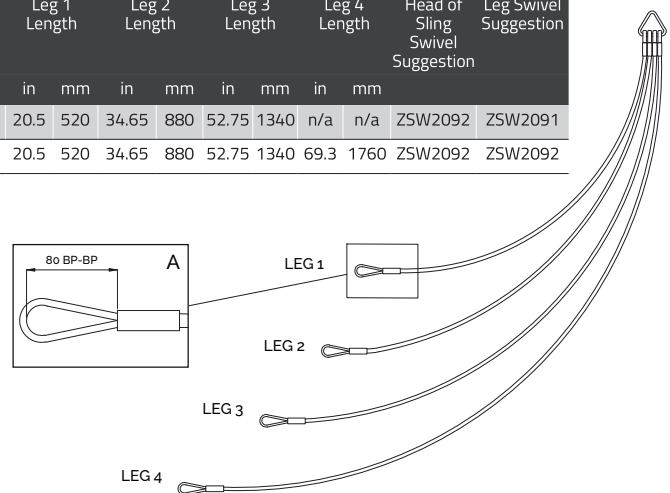


Slingco Part No.	Range		Ø A Nominal		B Length		C Length		D Length		Ø E		Approx. Break Load	
	in	mm	in	mm	in	mm	in	mm	in	mm	in	mm	lb	kg
ZCS3505	0.25-0.50	6-13	0.37	9.5	66.1	1,680	29.7	755	6.7	170	0.9	23	4,400	1,964
ZCS3506	0.50-1.00	13-25	0.75	19	87.8	2,230	40.0	1,015	7.9	200	1.0	25.4	7,400	3,304
ZCS3507	1.00-1.50	25-38	1.25	32	79.9	2,030	35.2	895	9.5	240	1.4	36	10,000	4,530
ZCS3508	1.50-2.00	38-51	1.75	44.5	72.0	1,830	31.3	795	9.5	240	1.4	36	12,000	5,357
ZCS3509	2.00-2.75	51-70	2.38	60.5	85.8	2,180	37.0	940	11.8	300	1.6	41	16,000	7,142
ZCS3510	2.75-3.50	70-90	3.15	80	107.5	2,730	47.0	1,195	13.3	340	1.9	48.5	20,000	8,928
ZCS3511	3.50-4.25	89-108	3.87	98.5	104.3	2,650	44.5	1,130	15.3	390	1.9	48.5	24,000	10,714

TRI & QUAD PULLING SLING

This staggered pulling sling is designed to allow the pulling of multiple conductors at the same time while minimizing the overall diameter of your pulling bundle. These pulling slings come in a three leg or four leg versions. One should use a swivel for each leg and at the head of the sling to release torsion and allow the conductors to rotate freely. The suggested swivels are listed with each model.

Slingco Part No.	Leg 1 Length		Leg 2 Length		Leg 3 Length		Leg 4 Length		Head of Sling Swivel Suggestion	Leg Swivel Suggestion
	in	mm	in	mm	in	mm	in	mm		
ZSH2264	20.5	520	34.65	880	52.75	1340	n/a	n/a	ZSW2092	ZSW2091
ZSH2265	20.5	520	34.65	880	52.75	1340	69.3	1760	ZSW2092	ZSW2092



OPEN ENDED GRIP



Ideal for joining two cables to form a continuous loop. Typical application: replacement of lift cables, where the old cable would be attached to the new one, and the cable then fed around with ease. Also used to temporarily splice cable and conductor where torsion forces are NOT an issue. Torsion should be released prior to splicing. Where torsion is present a swivel and two grips should be used.

Slingco Part No.	Range		Lattice Weave	Lattice Length		Approx. Break Load	
	in	mm		in	mm	lb	kg
OPEN ENDED STANDARD GRIP - GALVANISED							
ZCS0313	0.25 - 0.50	6 - 13	Single	15	380	1,680	760
ZCS6420	0.25 - 0.50	6 - 13	Double	22	559	3,500	1,588
ZCS0314	0.50 - 0.75	13 - 19	Single	24	610	2,240	1,015
ZCS6421	0.50 - 0.75	13 - 19	Double	30	762	4,500	2,040
ZCS6425	0.50 - 0.75	13 - 19	Multi	70	1,779	7,500	3,400
ZCS0315	0.75 - 1.00	19 - 25	Single	28	710	5,600	2,540
ZCS6422	0.75 - 1.25	19 - 32	Double	30	762	8,000	3,630
ZCS6426	0.75 - 1.00	19 - 25	Multi	80	2,032	11,800	5,352
ZCS0316	1.00 - 1.50	25 - 38	Single	32	815	7,840	3,555
ZCS6423	1.00 - 1.50	25 - 38	Double	36	915	10,000	4,537
ZCS6427	1.00 - 1.50	25 - 38	Multi	90	2,285	20,000	9,070
ZCS0317	1.50 - 2.00	38 - 50	Double	36	915	11,200	5,080
ZCS0318	2.00 - 2.50	50 - 63	Double	42	1,065	11,200	5,080
ZCS1158	2.50 - 3.50	63 - 89	Double	48	1,220	13,440	6,095
ZCS1159	3.50 - 4.50	89 - 115	Double	54	1,370	15,680	7,110
ZCS6424	4.25 - 4.88	108 - 124	Triple	55	1,400	19,500	8,847
ZCS1975	4.50 - 5.50	115 - 140	Double	54	1,370	15,680	7,110
OPEN ENDED STANDARD GRIP - 316 STAINLESS STEEL							
ZCS1995	0.25 - 0.50	6 - 13	Single	15	380	1,344	610
ZCS1996	0.50 - 0.75	13 - 19	Single	24	610	1,792	810
ZCS1997	0.75 - 1.00	19 - 25	Single	28	710	4,480	2,030
ZCS1998	1.00 - 1.50	25 - 38	Single	32	815	6,272	2,845
ZCS1999	1.50 - 2.00	38 - 50	Double	36	915	8,960	4,065
ZCS2000	2.00 - 2.50	50 - 63	Double	42	1,065	8,960	4,065
ZCS2001	2.50 - 3.50	63 - 89	Double	48	1,220	10,752	4,875
ZCS2002	3.50 - 4.50	89 - 115	Double	54	1,370	12,544	5,690
ZCS2003	4.50 - 5.50	115 - 140	Double	54	1,370	12,544	5,690
ZCS11923	6.50 - 7.50	165 - 191	Double	120	3,048	12,544	5,690

FIBRE OPTIC CABLE GRIP



Dual weave design from galvanised wire rope. Used for the installation of fibre optic cables for either overhead or underground applications. Made of galvanised steel.

Slingco Part No.	Range		Lattice Length		Overall Length		Approx. Break Load	
	in	mm	in	mm	in	mm	lb	kg
ZCS2008	0.11 - 0.23	2.5 - 5.6	11	265	18	455	950	431
ZCS2009	0.21 - 0.36	5.3 - 9.2	15	370	22	560	1,650	748
ZCS2010	0.32 - 0.49	8.1 - 12.5	19	470	27	690	2,200	998
ZCS2011	0.42 - 0.62	10.7 - 15.8	20	515	29	735	2,750	1,247
ZCS2012	0.53 - 0.75	13.5 - 19.1	23	595	32	815	3,700	1,678
ZCS2013	0.64 - 0.88	16.3 - 22.4	25	645	34	865	4,250	1,928
ZCS2014	0.75 - 1.00	19.1 - 25.5	27	720	37	940	4,250	1,928

SLINGCO NON-METALLIC ARAMID CABLE GRIPS

FOR PULLING CABLE IN MANY INDUSTRIAL & COMMERCIAL PROJECTS



- Slingco's Non-Metallic Aramid Cable Grip Features:
- Break loads similar to steel cable grips
 - Lightweight
 - No more frayed grip wires
 - UV Resistant and strong enough to last in salt water, pollutants, and underground
 - We can create custom grips to meet your specifications

Slingco's line of Non-Metallic Aramid Cable Grips are ideal for use in fiber optic cable installation operations, offshore applications, or for a multitude of uses in the utilities industry.

These grips are made of a high-strength, non-metallic aramid fiber, with UV protective coating, and now feature an improved weight to break ratio. They are suitable for pulling single cable and multiple cable bundles.

Thanks to the non-metallic material, these grips are easy to work with even without gloves. The woven mesh material also offers

a non-metallic, non-conductive alternative to steel grips.

We have many different styles of Non-Metallic Aramid Cable Grips for your project, such as Single Eye, Double Eye, Offset Eye, Lace Up, Mining Grips, and our new Single Eye Double Weave Grips made of ultra flex aramid material. We can also work with you to customize an Aramid Cable Grip to match any particular project specifications.

Call your Slingco Account Manager today and they will help you select the right grip for your project!

NS TYPE - SINGLE EYE ARAMID CABLE GRIP



Slingco Part No.	Range		Lattice Length		Approx. Break Load	
	in	mm	in	mm	lb	kg
SINGLE EYE SINGLE WEAVE NON-METALLIC CABLE GRIP						
ZCS1040	0.38 - 0.75	10 - 20	21	552	2,460	1,115
ZCS1022	0.75 - 1.25	20 - 30	21	523	3,580	1,620
ZCS2923	1.00 - 1.50	25 - 38	23	573	3,580	1,620
ZCS1041	1.25 - 1.50	30 - 40	25	642	4,920	2,230
ZCS1042	1.50 - 2.00	40 - 50	19	485	5,820	2,640
SINGLE EYE DOUBLE WEAVE NON-METALLIC CABLE GRIP						
ZCS1023	1.25 - 1.50	30 - 40	25	642	9,860	4,470
ZCS1024	1.50 - 2.00	40 - 50	21	523	11,880	5,390
ZCS1179	2.00 - 2.50	50 - 65	25	636	15,900	7,210
ZCS1180	2.50 - 3.00	65 - 80	36	908	15,900	7,210
ZCS1181	3.00 - 4.00	80 - 100	40	1,029	15,900	7,210
ZCS4079	3.94 - 4.92	100 - 125	125	3,168	15,900	7,212
SINGLE EYE DOUBLE WEAVE HIGH STRENGTH NON-METALLIC GRIP						
ZCS13054	4.00 - 5.00	102 - 127	118	2,992	45,500	20,638

Slingco Part No.	Range		Colour code	Approx. Break Load	
	in	mm		lb	kg
ULTRA-FLEX SINGLE EYE DOUBLE WEAVE NON-METALLIC CABLE GRIP					
ZCS09336	0.63 - 0.75	16 - 19	Yellow	5,000	2,267
ZCS09337	0.75 - 1.00	19 - 25	Red	6,000	2,721
ZCS09338	1.00 - 1.25	25 - 32	Blue	6,000	2,721
ZCS09339	1.25 - 1.50	32 - 38	White	6,000	2,721

ND TYPE - DOUBLE EYE ARAMID CABLE GRIP



Slingco Part No.	Range		Lattice Length		Approx. Break Load	
	in	mm	in	mm	lb	kg
DOUBLE EYE SINGLE WEAVE NON-METALLIC GRIP						
ZCS1148	0.38 - 0.75	10 - 20	22	552	2,460	1,115
ZCS1176	0.75 - 1.25	20 - 30	21	523	3,580	1,620
ZCS2922	1.00 - 1.50	25 - 38	23	573	3,580	1,620
ZCS1177	1.25 - 1.50	30 - 40	25	642	4,920	2,230
ZCS1178	1.50 - 2.00	40 - 50	19	487	5,820	2,640
DOUBLE EYE DOUBLE WEAVE NON-METALLIC GRIP						
ZCS1182	1.25 - 1.50	30 - 40	25	642	9,860	4,472
ZCS1183	1.50 - 2.00	40 - 50	26	667	11,880	5,389
ZCS1184	2.00 - 2.50	50 - 65	25	636	15,900	7,212
ZCS1185	2.50 - 3.00	65 - 80	30	762	15,900	7,212
ZCS1186	3.00 - 4.00	80 - 100	32	800	15,900	7,212
ZCS3813	4.00 - 5.00	102 - 127	61	1,540	15,900	7,212

NO TYPE - OFFSET EYE ARAMID CABLE GRIP



Single Offset Eye Single Weave Non-Metallic Grip

Slingco Part No.	Range		Lattice Length		Approx. Break Load	
	in	mm	in	mm	lb	kg
SINGLE OFFSET EYE SINGLE WEAVE NON-METALLIC GRIP						
ZCS2810	0.38 - 0.75	10-20	21	525	2,460	1,115
ZCS2811	0.75 - 1.25	20 - 30	21	525	3,580	1,620
ZCS2921	1.00 - 1.50	25 - 38	23	573	3,580	1,620
ZCS2812	1.25 - 1.50	30 - 40	25	642	4,920	2,230
ZCS2813	1.50 - 2.00	40 - 50	21	525	5,820	2,640
SINGLE OFFSET EYE DOUBLE WEAVE NON-METALLIC GRIP						
ZCS09342	0.5 - 1.00	13 - 25	39	990	8,093	3,671
ZCS2814	1.25 - 1.50	30 - 38	34	864	9,860	4,470
ZCS2815	1.50 - 2.00	38 - 50	25	635	11,880	5,390
ZCS2816	2.00 - 2.50	50 - 65	25	635	15,900	7,210
ZCS2817	2.50 - 3.00	65 - 80	26	660	15,900	7,210
ZCS2818	3.00 - 4.00	80 - 100	34	864	15,900	7,210
SINGLE OFFSET EYE EXTENDED EYE 12" NON-METALLIC GRIP						
ZCS7053	0.50 - 0.63	13 - 16	24	600	800	363
ZCS7054	0.63 - 0.74	16 - 19	24	600	1,000	454
ZCS7055	0.75 - 1.00	19 - 25	24	600	1,200	544
ZCS7056	1.00 - 1.25	25 - 32	24	600	1,200	544
SINGLE OFFSET EYE LACE UP NON-METALLIC CABLE GRIP						
ZCS09323	0.63 - 1.00	65 - 76	59	1,499	13,000	5,896
ZCS10476	3.00 - 3.50	76 - 102	30	762	5,000	2,268
DOUBLE OFFSET EYE NON-METALLIC CABLE GRIP						
ZCS8176	2.50 - 3.00	65 - 76	39	991	8,000	3,629
ZCS09959	2.50 - 3.00	65 - 76	36	914	9,000	4,082
ZCS6823	3.00 - 4.00	76 - 102	33	838	9,000	4,082



Single Offset Eye Lace Up Non-Metallic Cable Grip



Double Offset Eye Non-Metallic Cable Grip



SUBSEA MARINE GRIPS

These speciality grips are extremely heavy duty and suitable for large underwater pulls, plus other applications in the subsea and renewables industries. Galvanised steel construction with aluminium ferrules. Other materials in stainless steel and non-metallic Aramid are available on request.

Applications include array and export cable installation.

Available in single eye, double eye lace up and double eye with or without thimbles. Sizes range from 3.5 to over 20 inches.



Slingco Part No. FLEX Eye	Slingco Part No. THIMBLE Eye	Range		Lattice Length		Approx. Break Load		Lattice Material
		in	mm	in	mm	lb	kg	
SINGLE EYE								
ZCS12740-2M	ZCS12740-THI-2M	3.5 - 5	90 - 125	78.75	2,000	110,230	50,000	Galv.
ZCS12740-2.5M	ZCS740-THI-2.5M	3.5 - 5	90 - 125	98.5	2,500	110,230	50,000	Galv.
ZCS12740-3M	ZCS12740-THI-3M	3.5 - 5	90 - 125	118	3,000	110,230	50,000	Galv.
ZCS3525	ZCS3525-THI	4 - 5	102 - 127	78.75	2,005	110,310	45,500	Galv.
ZCS12741-2.5M	ZCS12741-THI-2.5M	4.3 - 5.7	110 - 145	98.5	2,500	121,250	55,000	Galv.
ZCS12741-3M	ZCS12741-THI-3M	4.3 - 5.7	110 - 145	118	3,000	121,250	55,000	Galv.
ZCS3526	ZCS3526-THI	5 - 6	127 - 152	71.7	1,821	104,720	47,500	Galv.
ZCS12742	ZCS12742-THI	5.1 - 6.7	130 - 172	118	3,000	143,300	65,000	Galv.
ZCS3527	ZCS3527-THI	6 - 8	152 - 203	66	1,678	110,230	50,000	Galv.
ZCS12743	ZCS12743-THI	6.1 - 8.25	155 - 210	118	3,000	154,300	70,000	Galv.
ZCS12744	ZCS12744-THI	7.67 - 9.8	195 - 250	118	3,000	187,393	85,000	Galv.
ZCS3528	ZCS3528-THI	8 - 10	203 - 255	80.5	2,047	138,900	63,000	Galv.
ZCS12745	ZCS12745-THI	9.25 - 11.22	235 - 285	118	3,000	198,400	90,000	Galv.
ZCS3529	ZCS3529-THI	10 - 12	255 - 305	76.5	1,945	138,900	63,000	Galv.
ZCS3530	ZCS3530-THI	12 - 14	305 - 355	97	2,460	138,000	62,600	Galv.
DOUBLE EYE								
ZCS12754-2M	ZCS12754-THI-2M	3.5 - 5	90 - 125	78.75	2,000	121,250	55,000	Galv.
ZCS12754-2.5M	ZCS12754-THI-2.5M	3.5 - 5	90 - 125	98.5	2,500	121,250	55,000	Galv.
ZCS12754-3M	ZCS12754-THI-3M	3.5 - 5	90 - 125	118	3,000	121,250	55,000	Galv.
ZCS3535	ZCS3535-THI	4 - 5	102 - 127	78.75	2,005	124,560	56,500	Galv.
ZCS12755-2.5M	ZCS12755-THI-2.5M	4.3 - 5.7	110 - 145	98.5	2,500	132,275	60,000	Galv.
ZCS12755-3M	ZCS12755-THI-3M	4.3 - 5.7	110 - 145	118	3,000	132,275	60,000	Galv.
ZCS3536	ZCS3536-THI	5 - 6	127 - 152	71.7	1,821	124,560	56,500	Galv.
ZCS12756	ZCS12756-THI	5.1 - 6.7	130 - 172	118	3,000	165,350	75,000	Galv.
ZCS3537	ZCS3537-THI	6 - 8	152 - 203	64.3	1,633	126,765	57,500	Galv.
ZCS12757	ZCS12757-THI	6.1 - 8.25	155 - 210	118	3,000	176,370	80,000	Galv.
ZCS12758	ZCS12758-THI	7.67 - 9.8	195 - 250	118	3,000	198,400	90,000	Galv.
ZCS3538	ZCS3538-THI	8 - 10	203 - 255	80.5	2,047	156,528	71,000	Galv.
ZCS12759	ZCS12759-THI	9.25 - 11.22	235 - 285	118	3,000	209,439	95,000	Galv.
ZCS3539	ZCS3539-THI	10 - 12	255 - 305	76.5	1,945	156,528	71,000	Galv.
ZCS3540	ZCS3540-THI	12 - 14	305 - 355	97	2,460	156,528	71,000	Galv.
ZCS3540-3M	ZCS3540-THI-3M	12 - 14	305 - 355	118	3,000	156,528	71,000	Galv.
LACE UP								
ZCS12760	ZCS12760-THI	3.5 - 5	90 - 125	78.75	2,000	110,230	50,000	Galv.
ZCS3545	ZCS3545-THI	4 - 5	102 - 127	78.75	2,005	105,822	48,000	Galv.
ZCS12761	ZCS12761-THI	4.3 - 5.7	110 - 145	98.5	2,500	110,230	50,000	Galv.
ZCS3546	ZCS3546-THI	5 - 6	127 - 152	71.7	1,821	105,822	48,000	Galv.
ZCS12762	ZCS12762-THI	5.1 - 6.7	130 - 172	118	3,000	154,300	70,000	Galv.
ZCS3547	ZCS3547-THI	6 - 8	152 - 203	66	1,678	105,822	48,000	Galv.
ZCS12763	ZCS12763-THI	6.1 - 8.25	155 - 210	118	3,000	154,300	70,000	Galv.
ZCS12764	ZCS12764-THI	7.67 - 9.8	195 - 250	118	3,000	198,000	90,000	Galv.
ZCS3548		8 - 10	203 - 255	80.5	2,047	132,277	60,000	Galv.
	ZCS3548-THI	8 - 10	203 - 255	98.5	2,500	132,277	60,000	Galv.
ZCS12765	ZCS12765-THI	9.25 - 11.22	235 - 285	118	3,000	198,000	90,000	Galv.
ZCS3549		10 - 12	255 - 305	76.5	1,945	132,277	60,000	Galv.
	ZCS3549-THI	10 - 12	255 - 305	98.5	2,500	132,277	60,000	Galv.
ZCS3550	ZCS3550-THI	12 - 14	305 - 355	118.35	3,006	132,277	60,000	Galv.

WIND TURBINE SUPPORT GRIP - HEAVY DUTY THIMBLE OFFSET EYE

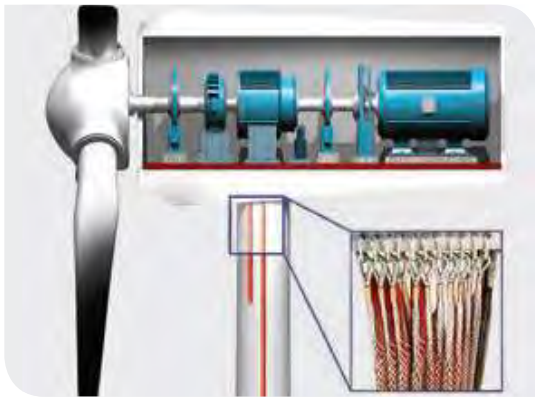


Slingco has developed a range of cable grips tailored for the renewable energy sector for use in:

- Cable installation – on-shore and off-shore
- Cable support inside wind turbines
- Cable management

For wind turbines, special features have been adapted to allow for minimal contact with the actual cable while still allowing excellent working loads and cable support.

The Slingco Wind Turbine Support Grip is manufactured from 316 Stainless Steel and provides cable support and control inside the wind turbine. It features rounded copper ferrules and offers reduced cable contact for high vibration environments. Custom grips can be adapted to meet any requirement.



Slingco Part No.	Range		Lattice Length		Approx. Break Load	
	in	mm	in	mm	lb	kg
ZCS2844	0.31 - 0.40	8 - 10	25	635	1,485	670
ZCS2845	0.40 - 0.60	10 - 15	26	660	2,295	1,040
ZCS2846	0.60 - 0.80	15 - 20	28	711	2,900	1,315
ZCS2847	0.80 - 0.99	20 - 25	29	736	4,550	2,080
ZCS2848	1.0 - 1.19	25 - 30	29	736	5,450	2,475
ZCS2849	1.20 - 1.58	30 - 40	31	787	7,800	3,575
ZCS2850	1.58 - 1.98	40 - 50	39	990	10,750	4,890
ZCS2851	1.98 - 2.37	50 - 60	39	990	10,750	4,890
ZCS2852	2.38 - 2.77	60 - 70	47	1194	14,000	6,420
ZCS2853	2.77 - 3.55	70 - 90	47	1194	14,000	6,420
ZCS2854	3.55 - 4.33	90 - 110	47	1194	18,000	8,165

EXTENDED THIMBLE EYE HEAVY DUTY DOUBLE WEAVE STAINLESS STEEL CABLE GRIP



Slingco Part No.	Range		Lattice Length		Eye Extension Length		Approx. Break Load	
	in	mm	in	mm	in	mm	lb	kg
ZCS2870	0.39 - 0.60	10 - 15	20	500	20	350	2,295	1,040
ZCS2871	0.60 - 0.80	15 - 20	20	500	20	350	2,903	1,315
ZCS2872	0.80 - 0.99	20 - 25	20	500	20	350	4,590	2,082
ZCS2873	1.0 - 1.19	25 - 30	20	500	20	350	5,468	2,480
ZCS2874	1.20 - 1.58	30 - 40	20	500	20	350	7,898	3,582

SINGLE EYE CLOSED MESH CABLE SUPPORT GRIP

Slingco closed mesh support grip in Stainless Steel. Closed mesh for when end of cable is available.



Slingco Part No.	Range		Lattice Length		Approx. Break Load	
	in	mm	in	mm	lb	kg
ZCS1893	0.50 - 0.63	12 - 16	9.7	247	567	255
ZCS1894	0.63 - .0.75	16 - 19	9.7	247	890	400
ZCS1895	0.75 - 1.00	19 - 25	13	331	1,040	470
ZCS1896	1.00 - 1.25	25 - 31	13.5	344	1,700	770
ZCS1897	1.25 - 1.50	31 - 38	15	382	1,700	770
ZCS1898	1.50 - 1.75	38 - 44	16.5	420	1,700	770
ZCS1899	1.75 - 2.00	44 - 50	20	509	2,300	1,040
ZCS1900	2.00 - 2.50	50 - 63	21	535	3,400	1,540
ZCS1901	2.50 - 3.00	63 - 76	24	611	3,400	1,540
ZCS1902	3.00 - 3.50	76 - 89	26	662	5,000	2,265
ZCS1903	3.50 - 4.00	89 - 102	29	738	5,000	2,265

SINGLE EYE SPLIT MESH LACE CLOSING CABLE SUPPORT GRIP

In Stainless Steel. Split mesh is for when end of cable is not available.



Slingco Part No.	Range		Lattice Length		Approx. Break Load	
	in	mm	in	mm	lb	kg
ZCS1904	0.50 - 0.63	12 - 16	9.7	247	567	255
ZCS1905	0.63 - .0.75	16 - 19	9.7	247	890	358
ZCS1906	0.75 - 1.00	19 - 25	13	331	1,040	470
ZCS1907	1.00 - 1.25	25 - 31	13.5	344	1,700	770
ZCS1908	1.25 - 1.50	31 - 38	15	382	1,700	770
ZCS1909	1.50 - 1.75	38 - 44	16.5	420	1,700	770
ZCS1910	1.75 - 2.00	44 - 50	20	509	2,300	1,040
ZCS1911	2.00 - 2.50	50 - 63	21	535	3,400	1,540
ZCS1912	2.50 - 3.00	63 - 76	24	611	3,400	1,540
ZCS1913	3.00 - 3.50	76 - 89	26	662	5,000	2,265
ZCS1914	3.50 - 4.00	89 - 102	29	738	5,000	2,265

SINGLE EYE SPLIT MESH ROD CLOSING CABLE SUPPORT GRIP

Similar to the lace up grip, in Stainless Steel, but in this design it is closed by inserting a metal rod down the length of the grip. For when end of cable is not available.



Slingco Part No.	Range		Lattice Length		Approx. Break Load	
	in	mm	in	mm	lb	kg
ZCS2362	0.50 - 0.63	12 - 16	9.7	247	567	255
ZCS2363	0.63 - 0.75	16 - 19	9.7	247	890	400
ZCS2162	0.75 - 1.00	19 - 25	13	331	1,040	470
ZCS2163	1.00 - 1.25	25 - 31	13.5	344	1,700	770
ZCS2164	1.25 - 1.50	31 - 38	15	382	1,700	770
ZCS2165	1.50 - 1.75	38 - 44	16.5	420	1,700	770
ZCS2166	1.75 - 2.00	44 - 50	20	509	2,300	1,040
ZCS2167	2.00 - 2.50	50 - 63	21	535	3,400	1,540
ZCS2168	2.50 - 3.00	63 - 76	24	611	3,400	1,540
ZCS2169	3.00 - 3.50	76 - 89	26	662	5,000	2,265
ZCS2372	3.50 - 4.00	89 - 102	29	738	5,000	2,265

DOUBLE EYE CLOSED MESH CABLE SUPPORT GRIP

Double eye closed mesh support grip in stainless steel. Two eyes for two connect/support points. Closed mesh for when end of cable is available.



Slingco Part No.	Range		Lattice Length		Lattice Material	Approx. Break Load	
	in	mm	in	mm		lb	kg
ZCS2038	0.50 - 0.63	12 - 16	9.7	247	304 Stainless	512	230
ZCS2039	0.63 - 0.75	16 - 19	9.7	247	304 Stainless	740	335
ZCS2040	0.75 - 1.00	19 - 25	13	331	304 Stainless	1,000	450
ZCS2041	1.00 - 1.25	25 - 31	15	344	304 Stainless	1,540	695
ZCS2042	1.25 - 1.50	31 - 38	16.5	382	304 Stainless	1,540	695
ZCS2043	1.50 - 1.75	38 - 44	15	420	304 Stainless	2,010	910
ZCS2044	1.75 - 2.00	44 - 50	21	509	304 Stainless	3,230	1,465
ZCS2045	2.00 - 2.50	50 - 63	24	535	304 Stainless	3,230	1,465
ZCS2046	2.50 - 3.00	63 - 76	26	611	304 Stainless	4,000	1,815
ZCS2047	3.00 - 3.50	76 - 89	29	662	304 Stainless	4,000	1,815
ZCS2048	3.50 - 4.00	89 - 102	29	738	304 Stainless	4,001	1,815
ZCS6404	4.00 - 4.50	102 - 114	30	762	304 Stainless	4,000	1,815
ZCS6405	4.50 - 5.00	114 - 127	30	762	304 Stainless	4,000	1,815
ZCS6406	5.00 - 5.50	127 - 140	30	762	304 Stainless	4,000	1,815

DOUBLE EYE SPLIT MESH LACE CLOSING CABLE SUPPORT GRIP

Double eye split mesh lace closing, in Stainless Steel, for secure attachment and support where the cable end is not accessible.



Slingco Part No.	Range		Lattice Length		Lattice Material	Approx. Break Load	
	in	mm	in	mm		lb	kg
ZCS2998	0.50 - 0.63	12 - 16	10	254	304 Stainless	530	240
ZCS2999	0.63 - 0.75	16 - 19	10	254	304 Stainless	790	360
ZCS3000	0.75 - 1.00	19 - 25	13	330	304 Stainless	1,020	460
ZCS3001	1.00 - 1.25	25 - 31	14	355	304 Stainless	1,610	730
ZCS3002	1.25 - 1.50	31 - 38	15	381	304 Stainless	1,610	730
ZCS3003	1.50 - 1.75	38 - 44	17	432	304 Stainless	1,610	730
ZCS3004	1.75 - 2.00	44 - 50	19	482	304 Stainless	2,150	975
ZCS3005	2.00 - 2.50	50 - 63	21	533	304 Stainless	3,260	1,480
ZCS3006	2.50 - 3.00	63 - 76	23	584	304 Stainless	3,260	1,480
ZCS3007	3.00 - 3.50	76 - 89	25	635	304 Stainless	4,900	2,222
ZCS3008	3.50 - 4.00	89 - 102	27	685	304 Stainless	4,900	2,222

DOUBLE EYE SPLIT MESH ROD CLOSING CABLE SUPPORT GRIP

Double eye split mesh rod closing, in Stainless Steel, for secure attachment and support where the cable end is not accessible.



Slingco Part No.	Range		Lattice Length		Lattice Material	Approx. Break Load	
	in	mm	in	mm		lb	kg
ZCS3009	0.50 - 0.63	12 - 16	8.5	216	304 Stainless	790	355
ZCS3010	0.63 - 0.75	16 - 19	8.5	216	304 Stainless	790	355
ZCS3011	0.75 - 1.00	19 - 25	10.5	266	304 Stainless	1,020	460
ZCS3012	1.00 - 1.25	25 - 31	12.5	317	304 Stainless	1,610	730
ZCS3013	1.25 - 1.50	31 - 38	14.5	368	304 Stainless	1,610	730
ZCS3014	1.50 - 1.75	38 - 44	15.5	394	304 Stainless	1,610	730
ZCS3015	1.75 - 2.00	44 - 50	16.5	419	304 Stainless	2,150	975
ZCS3016	2.00 - 2.50	50 - 63	19.5	495	304 Stainless	3,260	1,475
ZCS3017	2.50 - 3.00	63 - 76	21.5	546	304 Stainless	3,260	1,475
ZCS3018	3.00 - 3.50	76 - 89	23.5	597	304 Stainless	5,750	2,600
ZCS3019	3.50 - 4.00	89 - 102	25.5	648	304 Stainless	5,750	2,600

OFFSET EYE CLOSED MESH CABLE SUPPORT GRIP

The offset eye grip is designed to support the cable weight as it hangs vertically or horizontally. Closed mesh for when end of cable is available.



Slingco Part No.	Range		Lattice Length		Approx. Break Load	
	in	mm	in	mm	lb	kg
ZCS1915	0.50 - 0.63	12 - 16	9.7	247	512	230
ZCS1916	0.63 - 0.75	16 - 19	9.7	247	740	335
ZCS1917	0.75 - 1.00	19 - 25	13	331	1,000	450
ZCS1918	1.00 - 1.25	25 - 31	13.5	344	1,540	695
ZCS1919	1.25 - 1.50	31 - 38	15	382	1,540	695
ZCS1920	1.50 - 1.75	38 - 44	16.5	420	1,540	910
ZCS1921	1.75 - 2.00	44 - 50	20	509	2,010	1,465
ZCS1922	2.00 - 2.50	50 - 63	21	535	3,230	1,465
ZCS1923	2.50 - 3.00	63 - 76	24	611	3,230	1,815
ZCS1924	3.00 - 3.50	76 - 89	26	662	4,000	1,815
ZCS1925	3.50 - 4.00	89 - 102	29	738	4,000	1,815
ZCS6408	4.00 - 4.50	102 - 114	28	711	4,000	1,815
ZCS6409	4.50 - 5.00	114 - 127	28	711	4,000	1,815
ZCS6410	5.00 - 5.50	127 - 140	28	711	4,000	1,815

OFFSET EYE SPLIT MESH LACE CLOSING CABLE SUPPORT GRIP

This grip, in Stainless Steel, is ideal for several support points along the same cable when the cable ends are not accessible.



Slingco Part No.	Range		Lattice Length		Approx. Break Load	
	in	mm	in	mm	lb	kg
ZCS1926	0.50 - 0.63	12 - 16	10	254	500	225
ZCS1927	0.63 - 0.75	16 - 19	10	254	750	340
ZCS1928	0.75 - 1.00	19 - 25	13	330	950	430
ZCS1929	1.00 - 1.25	25 - 31	14	355	1,500	680
ZCS1930	1.25 - 1.50	31 - 38	15	381	1,500	680
ZCS1931	1.50 - 1.75	38 - 44	17	432	1,500	680
ZCS1932	1.75 - 2.00	44 - 50	19	482	2,000	905
ZCS1933	2.00 - 2.50	50 - 63	21	533	2,150	975
ZCS1934	2.50 - 3.00	63 - 76	23	584	2,150	975
ZCS1935	3.00 - 3.50	76 - 89	25	635	3,800	1,720
ZCS1936	3.50 - 4.00	89 - 102	27	685	3,800	1,720

OFFSET EYE SPLIT MESH ROD CLOSING CABLE SUPPORT GRIP

Ideal for several support points along the same cable when the cable ends are not accessible. Made from Stainless Steel.



Slingco Part No.	Range		Lattice Length		Approx. Break Load	
	in	mm	in	mm	lb	kg
ZCS3031	0.50 - 0.63	12 - 16	7	178	500	225
ZCS3032	0.63 - 0.75	16 - 19	9	229	750	340
ZCS3033	0.75 - 1.00	19 - 25	10	254	950	430
ZCS3034	1.00 - 1.25	25 - 31	12	305	1,500	680
ZCS3035	1.25 - 1.50	31 - 38	14	359	1,500	680
ZCS3036	1.50 - 1.75	38 - 44	15	381	1,500	680
ZCS3037	1.75 - 2.00	44 - 50	16	406	2,000	905
ZCS3038	2.00 - 2.50	50 - 63	19	483	3,100	975
ZCS3039	2.50 - 3.00	63 - 76	20	508	3,100	975
ZCS3040	3.00 - 3.50	76 - 89	21	533	4,300	1,720
ZCS3041	3.50 - 4.00	89 - 102	21	533	4,900	1,720



For swivels see page 29.

UNIVERSAL EYE CLOSED MESH CABLE SUPPORT GRIP

Fitted with an adjustable eye for easy and secure attachment, where the end of the cable can be inserted in to the support grip. Made from Stainless Steel.



Slingco Part No.	Range		Lattice Length		Approx. Break Load	
	in	mm	in	mm	lb	kg
ZCS2664	0.50 - 0.63	12 - 16	10	254	530	240
ZCS2665	0.63 - 0.75	16 - 19	10	254	790	360
ZCS2666	0.75 - 1.00	19 - 25	13	330	1,020	460
ZCS2667	1.00 - 1.25	25 - 31	14	355	1,610	730
ZCS2324	1.25 - 1.50	31 - 38	15	381	1,610	730
ZCS2668	1.50 - 1.75	38 - 44	17	432	1,610	730
ZCS2669	1.75 - 2.00	44 - 50	19	483	2,150	975
ZCS2670	2.00 - 2.50	50 - 63	21	533	3,260	1,480
ZCS2671	2.50 - 3.00	63 - 76	23	584	3,260	1,480

UNIVERSAL EYE SPLIT MESH LACE CLOSING CABLE SUPPORT GRIP

Fitted with an adjustable eye for easy and secure attachment, where the end of the cable is not accessible. Made from Stainless Steel.



Slingco Part No.	Range		Lattice Length		Approx. Break Load	
	in	mm	in	mm	lb	kg
ZCS2672	0.50 - 0.63	12 - 16	10	254	530	240
ZCS2673	0.63 - 0.75	16 - 19	10	254	790	360
ZCS2674	0.75 - 1.00	19 - 25	13	330	1,020	460
ZCS2675	1.00 - 1.25	25 - 31	14	355	1,610	730
ZCS2676	1.25 - 1.50	31 - 38	15	381	1,610	730
ZCS2677	1.50 - 1.75	38 - 44	17	432	1,610	730
ZCS2678	1.75 - 2.00	44 - 50	19	483	2,150	975
ZCS2679	2.00 - 2.50	50 - 63	21	533	3,260	1,480
ZCS2680	2.50 - 3.00	63 - 76	23	584	3,280	1,480
ZCS2681	3.00 - 3.50	76 - 89	25	635	4,900	2,222
ZCS2682	3.50 - 4.00	89 - 102	27	686	4,900	2,222

UNIVERSAL EYE SPLIT MESH ROD CLOSING CABLE SUPPORT GRIP

Fitted with an adjustable eye for easy and secure attachment, where the end of the cable is not accessible. Made from Stainless Steel.



Slingco Part No.	Range		Lattice Length		Approx. Break Load	
	in	mm	in	mm	lbs	kg
ZCS2683	0.50 - 0.63	12 - 16	8.5	216	530	240
ZCS2684	0.63 - 0.75	16 - 19	8.5	216	790	360
ZCS2685	0.75 - 1.00	19 - 25	10.5	267	1,020	460
ZCS2686	1.00 - 1.25	25 - 31	12.5	317	1,610	730
ZCS2687	1.25 - 1.50	31 - 38	14.5	368	1,610	730
ZCS2688	1.50 - 1.75	38 - 44	15.5	394	1,610	730

BUS DROP GRIPS



Lightweight easy to use Bus Drop Grips are perfect for supporting cables in such applications as Data Centers, Control Centers and other wiring to rack applications.

Slingco Part No	Range		Wire Material	Eye length		Approx. Break Load	
	in	mm		in	mm	lb	kg
ZCS6969	0.22 - 0.32	6.1 - 8.1	Galvanised	3.5	88.9	350	158
ZCS6970	0.30 - 0.43	8.1 - 10.9	Galvanised	4	101.6	450	204
ZCS6971	0.41 - 0.56	10.9 - 14.2	Galvanised	4.75	120.6	550	249
ZCS6972	0.53 - 0.73	14.2 - 18.5	Galvanised	6	152.4	1,000	453
ZCS6973	0.70 - 0.85	18.5 - 21.6	Galvanised	6.75	171.4	1,400	635
ZCS6974	0.82 - 1.00	21.6 - 25.4	Galvanised	8	203.2	1,400	635
ZCS6975	0.96 - 1.25	25.4 - 31.7	Galvanised	9.5	241.3	1,500	680
ZCS09744	0.22 - 0.32	6.1 - 8.1	304 Stainless Steel	3.5	88.9	100	45.36
ZCS09745	0.30 - 0.43	8.1 - 10.9	304 Stainless Steel	4	101.6	260	117.9
ZCS09746	0.41 - 0.56	10.9 - 14.2	304 Stainless Steel	4.75	120.6	550	249
ZCS09717	0.53 - 0.73	14.2 - 18.5	304 Stainless Steel	6	152.4	1,000	453
ZCS09747	0.70 - 0.85	18.5 - 21.6	304 Stainless Steel	6.75	171.4	1,400	635
ZCS09748	0.82 - 1.00	21.6 - 25.4	304 Stainless Steel	8.0	203.2	1,400	635
ZCS09749	0.96 - 1.25	25.4 - 31.7	304 Stainless Steel	9.5	241.3	1,400	680
ZCS09968	0.41 - 0.56	10.9 - 14.2	ALL 316 Stainless Steel	4.75	120.6	550	249
ZCS09969	0.53 - 0.73	14.2 - 18.5	ALL 316 Stainless Steel	6	152.4	1,000	453
ZCS10400	0.70 - 0.85	18.5 - 21.6	ALL 316 Stainless Steel	6.75	171.4	1,400	635
ZCS10401	0.82 - 1.00	21.6 - 25.4	ALL 316 Stainless Steel	8.0	203.2	1,400	635

SERVICE DROP GRIPS



Use these grips to support cables in manufacturing, industrial and open space environments. The extended eye allows for easy installation and hanging from conveniently placed connection points. Also great for Control room and wire to rack applications.

Slingco Part No	Range		Wire Material	Eye length		Approx. Break Load	
	in	mm		in	mm	lb	kg
ZCS7684	0.22 - 0.32	5.6 - 8.1	Galvanised	9	229	1,100	499
ZCS7685	0.30 - 0.43	7.6 - 10.9	Galvanised	9	229	1,100	499
ZCS7686	0.41 - 0.56	10.4 - 14.2	Galvanised	9	229	1,100	499
ZCS7687	0.53 - 0.73	13.5 - 18.5	Galvanised	9	229	1,100	499
ZCS7688	0.70 - 0.85	17.8 - 21.6	Galvanised	9	229	1,900	861
ZCS7689	0.82 - 1.00	20.8 - 25.4	Galvanised	9	229	1,900	861
ZCS7690	0.96 - 1.25	24.4 - 31.7	Galvanised	7	178	1,900	861
ZCS09733	0.22 - 0.32	5.6 - 8.1	304 Stainless Steel	9	229	650	294
ZCS09734	0.30 - 0.43	7.6 - 10.9	304 Stainless Steel	9	229	1,100	499
ZCS09735	0.41 - 0.56	10.4 - 14.2	304 Stainless Steel	9	229	1,100	499
ZCS09736	0.53 - 0.73	13.5 - 18.5	304 Stainless Steel	9	229	1,100	499
ZCS09737	0.70 - 0.85	17.8 - 21.6	304 Stainless Steel	9	229	1,900	861
ZCS09738	0.82 - 1.00	20.8 - 25.4	304 Stainless Steel	9	229	1,900	861
ZCS09739	0.96 - 1.25	24.4 - 31.7	304 Stainless Steel	7	178	1,900	861

SPRINGS



Support the dead weight of cables. Used in conjunction with support, service or bus drop grips. These safety springs relieve strain by dampening pull vibrations. Available in two working load strengths. The safety spring helps prevent pull outs. Avoid downtime and accidents from disconnected cables.

Can be used with any strain relief support grips. Attach grip eye to bottom of spring.

Slingco Part No.	Working Load (lb)		Diameter		Spring Length	
	lb	kg	in	mm	in	mm
ZCS8560	40	18.14	0.75	19.0	6.1	155
ZCS8561	80	36.28	1.00	25.4	6.1	155

HEAVY DUTY CABLE SUPPORT GRIPS

Heavy Duty support grips made from stainless steel are perfect for supporting heavier cable, conduit or any other cylindrical object. Often used by Utilities and Contractors to support cables transitioning from overhead to underground. One may support multiple cables in one grip. The overall diameter of the cable bundle should fit within the listed range.



HEAVY DUTY SUPPORT GRIPS - SINGLE EYE

Slingco Part No.	Range		Lattice Length		Lattice Material	Approx. Break Load	
	in	mm	in	mm		lb	kg
ZCS7065	0.50 - 0.63	13 - 16	10.4	265	Stainless Steel	1,370	621
ZCS7066	0.63 - 0.75	16 - 19	11.7	296	Stainless Steel	2,060	944
ZCS7067	0.75 - 1.00	19 - 25	13.6	346	Stainless Steel	2,060	944
ZCS7068	1.00 - 1.25	25 - 32	15.4	391	Stainless Steel	2,678	1,216
ZCS7069	1.25 - 1.50	32 - 38	17.4	441	Stainless Steel	4,490	2,037
ZCS7070	1.50 - 1.75	38 - 44	24.2	615	Stainless Steel	4,490	2,037
ZCS7071	1.75 - 2.00	44 - 51	23.6	600	Stainless Steel	5,000	2,269
ZCS7072	2.00 - 2.50	51 - 63	21.2	539	Stainless Steel	8,940	4,056
ZCS7073	2.50 - 3.00	63 - 76	21.2	538	Stainless Steel	8,940	4,056
ZCS7074	3.00 - 3.50	76 - 87	26.2	666	Stainless Steel	13,420	6,089
ZCS7075	3.50 - 4.00	87 - 102	31.1	790	Stainless Steel	13,420	6,089

HEAVY DUTY SUPPORT GRIPS - DOUBLE EYE

Slingco Part No.	Range		Lattice Length		Lattice Material	Approx. Break Load	
	in	mm	in	mm		lb	kg
ZCS3057	0.50 - 0.63	13 - 16	10.9	277	316 SS	1,370	621
ZCS3058	0.63 - 0.75	16 - 19	10.2	258	316 SS	2,080	944
ZCS3059	0.75 - 1.00	19 - 25	13.6	346	316 SS	2,080	944
ZCS7136	1.00 - 1.25	25 - 32	22	559	316 SS	2,670	1,211
ZCS7137	1.25 - 1.50	31 - 38	25.2	640	316 SS	4,490	2,037
ZCS7138	1.50 - 1.75	38 - 44	27	686	316 SS	4,490	2,037
ZCS7139	1.75 - 2.00	44 - 50	31	782	316 SS	5,000	2,268
ZCS7140	2.00 - 2.50	50 - 63	28	711	316 SS	8,940	4,056
ZCS7141	2.50 - 3.00	63 - 76	30	762	316 SS	8,940	4,056
ZCS7142	3.00 - 3.50	76 - 89	34	864	316 SS	12,000	5,445
ZCS7143	3.50 - 4.00	89 - 102	38	965	316 SS	12,000	5,445

HEAVY DUTY SUPPORT GRIPS - SINGLE EYE LACE-UP

Slingco Part No.	Range		Lattice Length		Lattice Material	Approx. Break Load	
	in	mm	in	mm		lb	kg
ZCS6907	0.50 - 0.63	13 - 16	11	277	Stainless Steel	1,370	621
ZCS6908	0.63 - 0.75	16 - 19	12	309	Stainless Steel	2,080	944
ZCS6909	0.75 - 1.00	19 - 25	14	345	Stainless Steel	2,080	944
ZCS6910	1.00 - 1.25	25 - 32	15	391	Stainless Steel	2,670	1,211
ZCS6911	1.25 - 1.50	32 - 38	16.5	417	Stainless Steel	4,490	2,037
ZCS6912	1.50 - 1.75	38 - 44	19.5	494	Stainless Steel	4,490	2,037
ZCS6913	1.75 - 2.00	44 - 51	21	537	Stainless Steel	5,000	2,269
ZCS6914	2.00 - 2.50	51 - 63	25	639	Stainless Steel	8,940	4,056
ZCS6915	2.50 - 3.00	63 - 76	25	623	Stainless Steel	8,940	4,056
ZCS6916	3.00 - 3.50	76 - 87	28	705	Stainless Steel	13,420	6,089
ZCS6917	3.50 - 4.00	87 - 102	36	924	Stainless Steel	13,420	6,089

HEAVY DUTY SUPPORT GRIPS - DOUBLE EYE LACE-UP

Slingco Part No.	Range		Lattice Length		Lattice Material	Approx. Break Load	
	in	mm	in	mm		lb	kg
ZCS7087	0.50 - 0.63	13 - 16	11	277	Stainless Steel	1,370	621
ZCS7088	0.63 - 0.75	16 - 19	12	309	Stainless Steel	2,080	944
ZCS7089	0.75 - 1.00	19 - 25	13	332	Stainless Steel	2,080	944
ZCS7090	1.00 - 1.25	25 - 32	15.5	391	Stainless Steel	2,670	1,211
ZCS7091	1.25 - 1.50	32 - 38	16.5	417	Stainless Steel	4,490	2,037
ZCS7092	1.50 - 1.75	38 - 44	23	589	Stainless Steel	4,490	2,037
ZCS7093	1.75 - 2.00	44 - 51	22	569	Stainless Steel	5,000	2,269
ZCS7094	2.00 - 2.50	51 - 63	26	654	Stainless Steel	8,940	4,056
ZCS7095	2.50 - 3.00	63 - 76	24.5	623	Stainless Steel	8,940	4,056
ZCS7096	3.00 - 3.50	76 - 87	29.5	749	Stainless Steel	13,420	6,089
ZCS7097	3.50 - 4.00	87 - 102	37.5	950	Stainless Steel	13,420	6,089

HEAVY DUTY SUPPORT GRIPS - SINGLE EYE ROD CLOSING

Slingco Part No.	Range		Lattice Length		Lattice Material	Approx. Break Load	
	in	mm	in	mm		lb	kg
ZCS7076	0.50 - 0.63	13 - 16	11	277	Stainless Steel	1,370	621
ZCS7077	0.63 - 0.75	16 - 19	12	309	Stainless Steel	2,080	944
ZCS7078	0.75 - 1.00	19 - 25	14	345	Stainless Steel	2,080	944
ZCS7079	1.00 - 1.25	25 - 32	15	391	Stainless Steel	2,670	1,211
ZCS7080	1.25 - 1.50	32 - 38	16.5	417	Stainless Steel	4,490	2,037
ZCS7081	1.50 - 1.75	38 - 44	19.5	494	Stainless Steel	4,490	2,037
ZCS7082	1.75 - 2.00	44 - 51	21	537	Stainless Steel	5,000	2,269
ZCS7083	2.00 - 2.50	51 - 63	27	654	Stainless Steel	8,940	4,056
ZCS7084	2.50 - 3.00	63 - 76	24.5	623	Stainless Steel	8,940	4,056
ZCS7085	3.00 - 3.50	76 - 87	27	693	Stainless Steel	13,420	6,089
ZCS7086	3.50 - 4.00	87 - 102	36	914	Stainless Steel	13,420	6,089

HEAVY DUTY SUPPORT GRIPS - DOUBLE EYE ROD CLOSING

Slingco Part No.	Range		Lattice Length		Lattice Material	Approx. Break Load	
	in	mm	in	mm		lb	kg
ZCS7098	0.50 - 0.63	13 - 16	11	277	Stainless Steel	1,370	621
ZCS7099	0.63 - 0.75	16 - 19	12	309	Stainless Steel	2,080	944
ZCS7100	0.75 - 1.00	19 - 25	14	351	Stainless Steel	2,080	944
ZCS7101	1.00 - 1.25	25 - 32	15	391	Stainless Steel	2,670	1,211
ZCS7102	1.25 - 1.50	32 - 38	16	417	Stainless Steel	4,490	2,037
ZCS7103	1.50 - 1.75	38 - 44	16.5	494	Stainless Steel	4,490	2,037
ZCS7104	1.75 - 2.00	44 - 51	17.5	537	Stainless Steel	5,000	2,269
ZCS7105	2.00 - 2.50	51 - 63	26	654	Stainless Steel	8,940	4,056
ZCS7106	2.50 - 3.00	63 - 76	25	623	Stainless Steel	8,940	4,056
ZCS7107	3.00 - 3.50	76 - 87	27	693	Stainless Steel	13,420	6,089
ZCS7108	3.50 - 4.00	87 - 102	36	914	Stainless Steel	13,420	6,089

DELUXE CORD GRIPS

Deluxe Cord Grips provide strain relief and bend support for cables running into machinery and connection boxes. Select the deluxe grip that fits the NPT size being connected to. Available with Straight Male, 90 degree Male, 45 degree Male and Straight Female connections. The wire mesh grip is sized to provide bend support and pull out resistance for the cable range listed.



Range	Straight Male		90° Male	45° Male	Straight Female
	in	mm	Slingco Part No.	Slingco Part No.	Slingco Part No.
3/8" NPT					
0.19 - 0.25	4.8 - 6.4	ZCS7713	ZCS7717		
0.25 - 0.31	6.4 - 7.9	ZCS7714	ZCS7718		
0.31 - 0.38	7.9 - 10	ZCS7715	ZCS7719		
0.38 - 0.44	10 - 11.1	ZCS7716	ZCS7720		
1/2" NPT					
0.19 - 0.25	4.8 - 6.4	ZCS7721	ZCS7727	ZCS7731	ZCS7735
0.25 - 0.38	6.4 - 10	ZCS7722	ZCS7728	ZCS7732	ZCS7736
0.38 - 0.50	10 - 12.7	ZCS7723	ZCS7729	ZCS7733	ZCS7737
0.50 - 0.63	12.7 - 16	ZCS7724	ZCS7730	ZCS7734	ZCS7738
0.63 - 0.75	16 - 19	ZCS7725			
0.75 - 0.88	19 - 22.4	ZCS7726			
3/4" NPT					
0.25 - 0.38	6.4 - 10	ZCS7739	ZCS7744	ZCS7748	ZCS7752
0.38 - 0.50	10 - 12.7	ZCS7740	ZCS7745	ZCS7749	ZCS7753
0.50 - 0.63	12.7 - 16	ZCS7741	ZCS7746	ZCS7750	ZCS7754
0.63 - 0.75	16 - 19	ZCS7742	ZCS7747	ZCS7751	ZCS7755
0.75 - 0.88	19 - 22.4	ZCS7743			
1" NPT					
0.44 - 0.56	11.2 - 14	ZCS7887	ZCS7894	ZCS7899	ZCS7904
0.56 - 0.69	14 - 17.5	ZCS7888	ZCS7895	ZCS7900	ZCS7905
0.63 - 0.75	16 - 19	ZCS7889	ZCS7896	ZCS7901	ZCS7906
0.75 - 0.88	19 - 22.4	ZCS7890	ZCS7897	ZCS7902	ZCS7907
0.88 - 1.00	22.4 - 25.4	ZCS7891	ZCS7898	ZCS7903	ZCS7908
1.00 - 1.13	25.4 - 28.7	ZCS7892			
1.13 - 1.25	28.7 - 31.8	ZCS7893			
1.25" NPT					
0.75 - 0.88	19 - 22.4	ZCS7909	ZCS7914		
0.88 - 1.00	22.4 - 25.4	ZCS7910	ZCS7915		
1.00 - 1.13	25.4 - 28.7	ZCS7911	ZCS7916		
1.13 - 1.25	28.7 - 31.8	ZCS7912	ZCS7917		
1.25 - 1.38	31.8 - 35.1	ZCS7913	ZCS7918		
1.5" NPT					
0.75 - 0.88	19 - 22.4	ZCS7919	ZCS7929		
0.88 - 1.00	22.4 - 25.4	ZCS7920	ZCS7930		
1.00 - 1.13	25.4 - 28.7	ZCS7921	ZCS7931		
1.13 - 1.25	28.7 - 31.8	ZCS7922	ZCS7932		
1.25 - 1.38	31.8 - 35.1	ZCS7923	ZCS7933		
1.31 - 1.44	33.3 - 36.6	ZCS7924			
1.44 - 1.56	36.6 - 39.6	ZCS7925			
1.56 - 1.69	39.6 - 43	ZCS7926			
1.69 - 1.81	43 - 46	ZCS7927			
1.75 - 1.88	44.5 - 47.8	ZCS7928			
2" NPT					
1.25 - 1.38	31.8 - 35.1	ZCS7934	ZCS7945		
1.31 - 1.44	33.3 - 36.6	ZCS7935	ZCS7946		
1.44 - 1.56	36.6 - 39.6	ZCS7936	ZCS7947		
1.56 - 1.69	39.6 - 43	ZCS7937	ZCS7948		
1.69 - 1.81	43 - 46	ZCS7938	ZCS7949		
1.75 - 1.88	44.5 - 47.8	ZCS7939	ZCS7950		
1.81 - 1.94	46 - 49.3	ZCS7940			
1.94 - 2.06	49.3 - 52.3	ZCS7941			
2.06 - 2.19	52.3 - 55.5	ZCS7942			
2.19 - 2.31	55.5 - 58.7	ZCS7943			
2.31 - 2.44	58.7 - 61.9	ZCS7944			
2.5" NPT					
1.69 - 1.81	43 - 46	ZCS7951			
1.81 - 1.94	46 - 49.3	ZCS7952			
1.94 - 2.06	49.3 - 52.3	ZCS7953			
2.06 - 2.19	52.3 - 55.5	ZCS7954			
2.19 - 2.31	55.5 - 58.7	ZCS7955			
2.31 - 2.44	58.7 - 62	ZCS7956			

DELUXE CORD GRIPS (CONTINUED)



Range		Straight Male	90° Male	45° Male	Straight Female
in	mm	Slingco Part No.	Slingco Part No.	Slingco Part No.	Slingco Part No.
3.0" NPT					
1.69 - 1.81	43 - 46	ZCS7957			
1.81 - 1.94	46 - 49.3	ZCS7958			
1.94 - 2.06	49.3 - 52.3	ZCS7959			
2.06 - 2.19	52.3 - 55.5	ZCS7960			
2.19 - 2.31	55.5 - 58.7	ZCS7961			
2.31 - 2.44	58.7 - 62	ZCS7962			
2.44 - 2.63	62 - 66.5	ZCS7963			
2.63 - 2.81	66.5 - 71.4	ZCS7964			
2.81 - 3.00	71.4 - 76.2	ZCS7965			
3.00 - 3.25	76.2 - 82.6	ZCS7966			

DUST-TIGHT CORD GRIPS

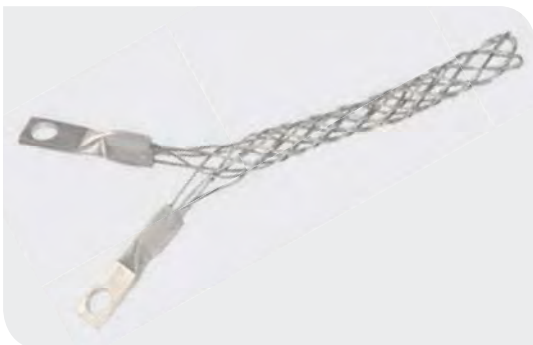


Dust-Tight Cord Grips provide strain relief and bend support for cables running into machinery and connection boxes. Select the deluxe grip that fits the NPT size being connected to. Available with Straight Male, 90 degree Male, 45 degree Male and Straight Female connections. The wire mesh grip is sized to provide bend support and pull out resistance for the cable range listed.



Slingco Part No. (Insulated)	Slingco Part No. (Non-insulated)	Range		NPT Size
		in	mm	in
ZCS7674	ZCS7756	0.22 - 0.32	5.6 - 8.1	0.5
ZCS7675	ZCS7757	0.30 - 0.43	7.6 - 10.9	0.5
ZCS7676	ZCS7758	0.40 - 0.54	10.1 - 13.7	0.5
ZCS7677	ZCS7759	0.52 - 0.73	13.2 - 18.5	0.75
ZCS7678	ZCS7760	0.70 - 0.97	17.8 - 24.6	1
ZCS7679	ZCS7761	0.94 - 1.25	23.8 - 31.8	1.25
ZCS7680		1.20 - 1.50	30.5 - 38.1	1.5
ZCS7681		1.40 - 1.75	38.1 - 44.5	2
ZCS7682		1.62 - 2.00	41.1 - 50.8	2.5
ZCS7683		2.00 - 2.45	50.8 - 62.2	2.5

I-GRIPS



Strain Relief mesh grip with crimped eye connectors for easy attachment to cord clamps. Eye connectors allow for attachment with screws for secure placement and hold. Made of galvanised wire these grips come in a variety of cable ranges. When installed relieves strain from bend angle and secures cord from pull out potential. Connectors made of aluminium.

Slingco Part No.	Size Range		Mesh Length		Eye Opening		Approx. Break Load	
	in	mm	in	mm	in	mm	lb	kg
ZCS8527	0.22 - 0.32	5.6 - 8.1	4.5	114.3	0.32	8.1	100	45.36
ZCS8513	0.30 - 0.43	7.62 - 11	4.5	114.3	0.32	8.1	180	81.64
ZCS8514	0.40 - 0.56	10 - 14	5	127	0.32	8.1	180	81.64
ZCS8515	0.52 - 0.73	13.2 - 19	6.5	157.5	0.32	8.1	450	204
ZCS8516	0.70 - 0.85	18 - 22	8.5	216	0.32	8.1	600	272
ZCS8517	0.82 - 1.00	21 - 25	8.5	216	0.32	8.1	600	272
ZCS8518	0.94 - 1.25	24 - 32	11.75	298.5	0.32	8.1	600	272
ZCS11560	1.75 - 2.0	44.45 - 50.8	11.75	298.5	0.25	6.3	600	272

CONDUIT RISER CABLE GRIP - STAINLESS STEEL



A single weave grip, with a support ring, designed for the support of electrical cabling in standard rigid conduit.



Slingco comparison reference numbers and Approximate breaking strengths (lbs)

Conduit size inches	Cable sizes diameter inches																
	0.50-0.63	0.63-0.75	0.75-1.00	1.00-1.25	1.25-1.50	1.50-1.75	1.75-2.00	2.0-2.5	2.0-3.0	2.5-3.0	3.5-4.0	3.0-3.5	3.5-4.5	3.5-4.0	4.0-4.5	4.5-5.0	4.5-5.0
	Length inches																
	8	9	11	12	12	14	15	17	17	18	18	20	20	21	21	27	27
0.75	ZCS2690 530																
1	ZCS2691 490	ZCS2694 790															
1.25	ZCS2692 450	ZCS2695 740	ZCS2698 1,030														
1.5		ZCS2696 690	ZCS2699 970	ZCS2701 1,610													
2	ZCS2693 370	ZCS2697 640	ZCS2700 920	ZCS2702 1,520	ZCS2704 1,610												
2.5					ZCS2705 1,510	ZCS2707 1,610	ZCS2708 2,150										
3				ZCS2703 1,340	ZCS2706 1,400	ZCS2709 1,490	ZCS2710 1,990	ZCS2711 3,260									
3.5								ZCS2714 2,970		ZCS2716 3,260							
4							ZCS2712 1,670	ZCS2713 2,680		ZCS2715 2,890		ZCS2717 4,080					
5									ZCS5645* 2,150	ZCS2719 2,150	ZCS5646* 3,130	ZCS2721 2,860		ZCS2723 3,130			
6												ZCS2722 2,240	ZCS5647 2,240	ZCS2724 2,240	ZCS4755 2,240	ZCS3259 4,995	ZCS4284 4,995

HEAVY DUTY HOSE RESTRAINT GRIPS / WHIPSOCKS



Safety restraining system designed to prevent whipping in the event of a pressurised hose becoming detached from its fitting.

Slingco Part No.	Eye Type	Range		Lattice Length		Lattice Weave	Approx. Break Load	
		in	mm	in	mm		lb	kg
DOUBLE THIMBLE EYE - GALVANISED STEEL								
ZCS5363	Thimble eye	1.0 - 1.5	25 - 38	26	660	Double	11,000	4,911
ZCS5364	Thimble eye	1.5 - 2.5	38 - 63	40	1,016	Double	20,000	8,928
ZCS5365	Thimble eye	2.5 - 3.5	63 - 89	42	1,067	Double	22,000	9,821
ZCS5366	Thimble eye	3.5 - 4.5	89 - 114	44	1,118	Double	27,000	12,053
ZCS5367	Thimble eye	4.5 - 5.5	114 - 140	48	1,219	Double	31,000	13,839
ZCS6012	Thimble eye	5.5 - 7.0	140 - 180	60	1,524	Double	50,000	22,685
DOUBLE THIMBLE EYE - 316 STAINLESS STEEL								
ZCS5650	Thimble eye	1.0 - 1.5	25 - 38	26	660	Double	7,700	3,437
ZCS5651	Thimble eye	1.5 - 2.5	38 - 63	40	1,016	Double	14,000	6,250
ZCS5652	Thimble eye	2.5 - 3.5	63 - 89	42	1,067	Double	15,400	6,874
ZCS5653	Thimble eye	3.5 - 4.5	89 - 114	44	1,118	Double	18,900	8,437
ZCS5654	Thimble eye	4.5 - 5.5	114 - 140	48	1,219	Double	21,700	9,687
ZCS6000	Thimble eye	5.5 - 7.0	140 - 180	60	1,524	Double	35,000	15,880
DOUBLE EYE MULTIWEAVE - MAX STRENGTH - 316 STAINLESS STEEL								
ZCS3995	Thimble eye	1.14 - 1.57	29 - 40	50	1,270	Double	35,000	15,625
ZCS3295	Flex eye	2.75 - 3.44	70 - 87	58	1,460	Multiple	49,000	22,230
ZCS3254	Flex eye	3.00 - 3.50	76 - 89	58	1,460	Multiple	39,200	17,785
ZCS6004	Flex eye	3.50 - 4.75	89 - 120	58	1,460	Multiple	50,000	22,320



HOSE WHIP RESTRAINT



The strong steel cable prevents hose-whip accidents in the event of hose or coupling failure.

Easily fitted spring loaded loops grip the hose firmly.

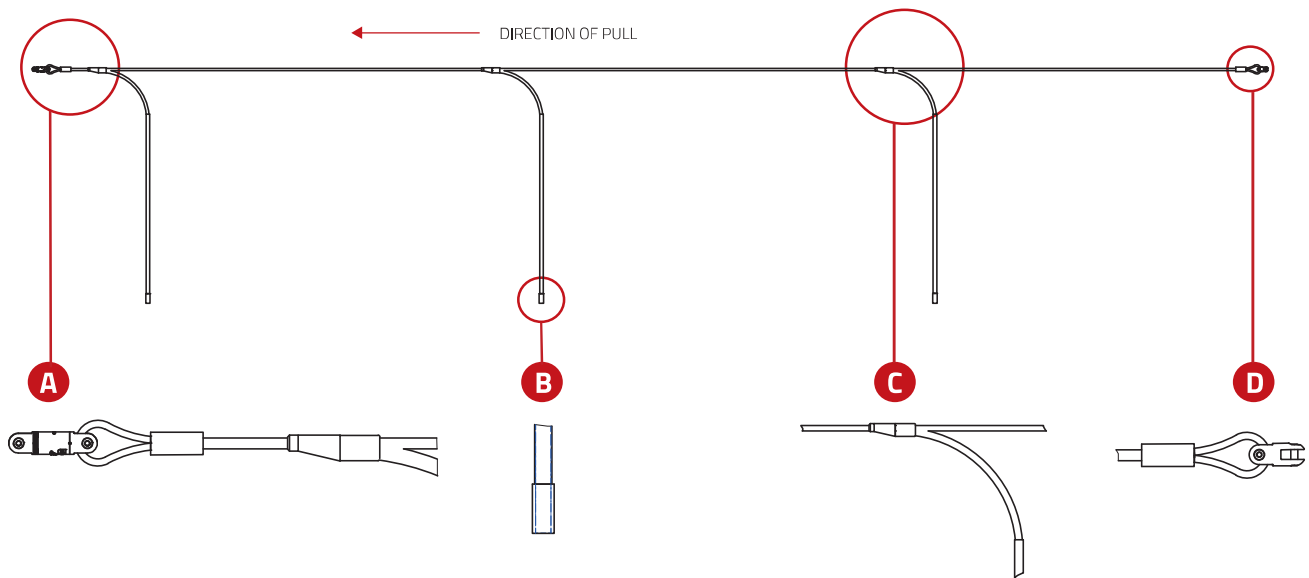
Slingco Part No.	Range		Lattice Weave	Lattice Length	
	in	mm		in	mm
ZCS0318HA	2.00 - 2.50	50 - 63	Double	42	1,065
ZCS1158HA	2.50 - 3.50	63 - 89	Double	48	1,220
ZCS1159HA	3.50 - 4.50	89 - 115	Double	54	1,370
ZCS1975HA	4.50 - 5.50	115 - 140	Double	54	1,370

ANTI ROTATIONAL DEVICE



The device prevents the cable from twisting as it travels over pulling blocks. Left uncontrolled, the optical cable's delicate glass fibres could be permanently damaged during installation.

- Stops cables from twisting as they pass over pulling blocks
- For use with fibre optic and OPGW cable
- Prevents irreparable damage to delicate fibre optics caused by cable twists during installation
- The ARD has weighted attachments that hang down while stringing, keeping the ARD vertical to stop cable rotation
- ARD attachments collapse in line, enabling them to travel easily over pulling blocks

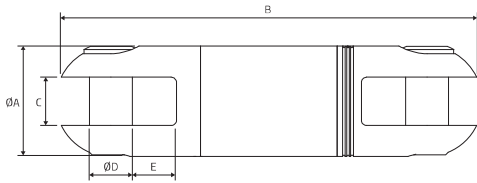


Slingco Part No.	Overall Length		Working load @3:1 Safety Factor		Length of Attachments Approx		Weight of each Attachment	
	in	mm	lb	kg	in	mm	lb	kg
ZAD3799	348	8,839	5,000	2,268	96	2,438	14	6.35

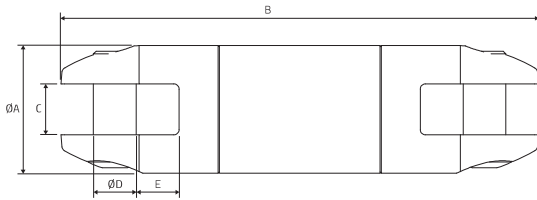
LINE PULLING SWIVELS

Swivels designed for use in stringing high tension wires for electrical transmission and distribution.

LINE PULLING SWIVEL – STANDARD ENDS



LINE PULLING SWIVEL – BULL NOSE



Swivels are important in pulling when the lines develop torsion during the installation. This torsion must be released. Use of a swivel will release torque and prevent it from reaching dangerous levels, which can cause damage to the cable or grip.

Slingco also offers a 'bull nose' style swivel designed for underground and overhead applications.

All swivels are stringently quality tested and inspected to ensure optimum performance and reliability.



LINE PULLING SWIVEL
STANDARD ENDS



LINE PULLING SWIVEL
BULL NOSE

Slingco Part No.	Safe working load lb (kN)		Ø A in (mm)	B Length in (mm)	C Slot width in (mm)	D Pin Ø in (mm)	Ø E Recess in (mm)	Weight lb (kg)
	3:1	5:1						
LINE PULLING SWIVEL – STANDARD ENDS								
ZSW2091	2,250 (10)	1,350 (6)	0.87 (22)	3.37 (85.6)	0.39 (10)	0.31 (8)	0.39 (10)	0.43 (0.19)
ZSW2092	3,500 (15.5)	2,100 (9.3)	0.98 (25)	3.98 (101.1)	0.43 (11)	0.39 (10)	0.43 (11)	0.56 (0.25)
ZSW2093	5,000 (22)	3,000 (13.2)	1.26 (32)	4.96 (126)	0.55 (14)	0.39 (10)	0.55 (14)	1.13 (0.51)
ZSW2094	7,000 (31.1)	4,200 (18.7)	1.38 (35)	5.22 (132.7)	0.55 (14)	0.49 (12.5)	0.54 (13.8)	1.44 (0.65)
ZSW2096	10,000 (44.5)	6,000 (26.7)	1.62 (41.25)	6.11 (155.1)	0.71 (18)	0.63 (16)	0.65 (16.5)	2.35 (1.07)
ZSW2097	15,000 (66)	9,000 (39.6)	2.09 (53)	7.34 (186.4)	0.79 (20)	0.71 (18)	0.83 (21)	4.59 (2.08)
LINE PULLING SWIVEL – BULL NOSE								
ZSW2649	4,000 (17.8)	2,400 (10.7)	1.26 (32)	4.74 (120.5)	0.61 (15.5)	0.37 (9.5)	0.52 (13.25)	1.01 (0.46)
ZSW2929	8,000 (35.5)	4,800 (21.4)	1.50 (38)	5.38 (136.6)	0.63 (16)	0.43 (11)	0.61 (15.5)	1.75 (0.80)
ZSW6122	10,000 (44.5)	6,000 (26.7)	1.87 (47.6)	7.02 (178.3)	0.75 (19.05)	0.63 (16)	0.63 (16)	3.72 (1.69)
ZSW6123	16,000 (71.2)	9,600 (42.7)	2.44 (62)	10.15 (257.7)	1.00 (25.4)	0.87 (22)	1.12 (28.5)	9.19 (4.17)
ZSW2857	30,000 (134)	18,000 (80)	2.50 (63.5)	11.13 (282.6)	1.00 (25.4)	0.87 (22.2)	1.13 (28.6)	10.44 (4.74)

Swivel and Cable Grip match-up

Approx. breaking strength of cable grip lb (kN)	Cable grip colour code	Size range O.D. in (mm)	Recommended swivel	Safe working load of swivel lb (kN)	Revolving Eye	Flexible Eye MU
LINE PULLING SWIVEL – STANDARD ENDS						
7,000 (31.1)	Dark green	0.25 - 0.50 (6 - 12)	ZSW2092	3,500 (15.6)	ZCS2177	ZCS1710
10,500 (46.7)	Brown	0.50 - 0.75 (12 - 19)	ZSW2093	5,000 (22.2)	ZCS2178	ZCS1711
14,100 (62.7)	Light blue	0.75 - 1.00 (19 - 25)	ZSW2093	5,000 (22.2)	ZCS2179	ZCS1712
25,000 (111.2)	Gold	1.00 - 1.25 (25 - 32)	ZSW2096	10,000 (44.5)	ZCS2180	ZCS1713
31,000 (137.9)	Black	1.25 - 1.50 (32 - 38)	ZSW2096	10,000 (44.5)	ZCS2181	ZCS1714
31,000 (137.9)	Red	1.50 - 1.75 (38 - 44)	ZSW2096	10,000 (44.5)	ZCS2182	ZCS1715
43,000-49,000 (191.3 - 218)	Dark blue	1.75 - 2.25 (44 - 57)	ZSW2097	15,000 (66.7)	ZSC2183*	ZCS1716'
LINE PULLING SWIVEL – BULL NOSE						
7,000 (31.1)	Dark green	0.25 - 0.50 (6 - 12)	ZSW2649	4,000 (17.8)	ZCS2177	ZCS1710
10,500 (46.7)	Brown	0.50 - 0.75 (12 - 19)	ZSW2929	5,000 (22.2)	ZCS2178	ZCS1711
14,100 (62.7)	Light blue	0.75 - 1.00 (19 - 25)	ZSW2929	5,000 (22.2)	ZCS2179	ZCS1712
25,000 (111.2)	Gold	1.00 - 1.25 (25 - 32)	ZSW6122	10000 (44.5)	ZCS2180	ZCS1713
31,000 (137.9)	Black	1.25 - 1.50 (32 - 38)	ZSW6122	10000 (44.5)	ZCS2181	ZCS1714
31,000 (137.9)	Red	1.50 - 1.75 (38 - 44)	ZSW6122	10000 (44.5)	ZSC2182	ZCS1715
43,000*-49,000' (191.3 - 218)	Dark blue	1.75 - 2.25 (44 - 57)	ZSW6123	16,000 (71.2)	ZSC2183*	ZCS1716'

The above is intended as a rough guide. The recommended working load should be determined by the competent person(s) using the cable grip and/or Slingco swivel.

Swivel or Connector Model	ZSW2091	ZSW2092	ZSW2093	ZSW2094	ZSW2096 ZSW6122	ZSW2097	ZSW2929	ZSW2649	ZSW2857	ZSW6123	ZSW6554	ZSW6555	ZSW6556	ZSW6557 ZSW6558 ZSW6559 ZSW6560
Replacement Pin (HEX)	SWI2858	SWI2810	SWI2340	SWI2341	SWI2343	SWI2344	SWI2801	SWI2648	SWI2748	SWI5184	SWI2859	SWI2339	SWI5309	SWI5310

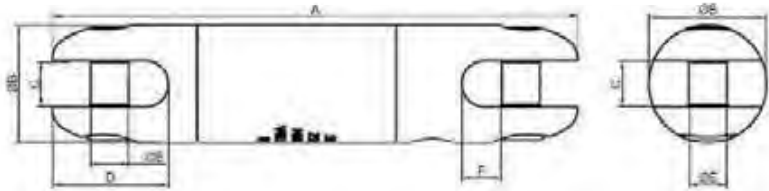
SAFETY NOTE: All Slingco Line Pulling Swivels are designed for straight line pulling and will not support side loads as would be encountered traveling over a bull wheel. Swivel selection should be based on pulling line diameter, grip size, opening dimensions, pin sizes, working load, and sheave groove diameter. Swivels are not designed for general lifting.

DIRECTIONAL DRILLING SWIVELS

Slingco Directional Drilling Swivels are designed to counter rotational forces caused by boring equipment used in underground pulling and drilling applications. Grease nipple included for removal of dirt and contaminants. Made of carbon steel and zinc passivated for durability. Hex pins. Quality tested and inspected to ensure optimum reliability and performance.



Slingco Part No	Safe Working Load (3:1)		A		Ø B		C		D		Ø E		F	
	lb	kN	in	mm	in	mm	in	mm	in	mm	in	mm	in	mm
ZSW11133	8,500	37.8	7.24	183.8	1.62	41.2	0.63	16.0	1.60	40.6	0.53	13.4	0.55	13.9
ZSW11134	10,000	44.4	8.32	211.3	2.00	50.8	0.75	19.0	1.79	45.0	0.59	14.9	0.75	19.0

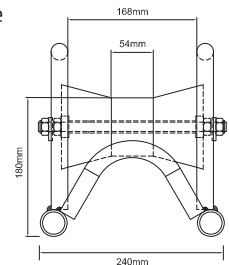


BRIDGE TYPE CABLE LAYING ROLLER



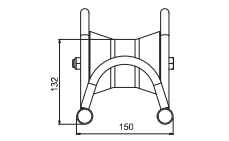
Made of steel with zinc plating for general purpose cable installation work in trenches or over rough surfaces. They are suitable for power, telecoms and utility installations, and can bridge existing cables or conduit in trenches or ducts.

The Compact Cable Roller is for use in narrow trenches and/or in confined areas. Contact Slingco if you have custom roller needs.



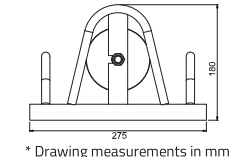
Bridge Type Cable Roller

Slingco Part No.	Base Footprint in (mm)	Height to top of roller in (mm)	Handle height in (mm)
ZGP2395	12 x 9.5 (305 x 240)	7.125 (180)	10 (255)



Compact Bridge Type Cable Laying Roller

Slingco Part No.	Base Footprint in (mm)	Height in (mm)	Max Cable Diameter in (mm)	Weight lb (kg)
ZGP8270	10.83 x 5.9 (275 x 150)	7 (180)	3.54 (90)	5.5 (2.5)



* Drawing measurements in mm

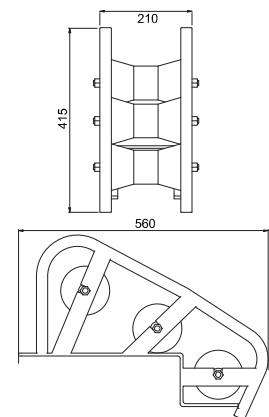
EDGE MOUNT MANHOLE LEAD-IN CABLE ROLLER (HEAVY DUTY)



The manhole cable roller leads the cable from the drum into the jointbox/manhole or the winch bond out of the manhole.

- Heavy duty tubular steel construction
- Suitable for cables up to 130mm
- 3 x 110mm diameter steel roller* fitted with sealed precision roller bearings
- Zinc plated
- Weight: 10 Kg

* The Diablo Rollers can be substituted with a heavy gauge 89mm tubular Steel Roller fitted oil impregnated maintenance free bushes for use with the heavier cables.



Slingco Part No.	Base Footprint in (mm)	Height in (mm)
ZGP8209	22 x 8.25 (560 x 210)	16.34 (415)