



# GIRDER CLAMP

Global Girder Clamps feature the highest quality manufacturing against a very competitive price. Compliance to the Australian 4991 standard.



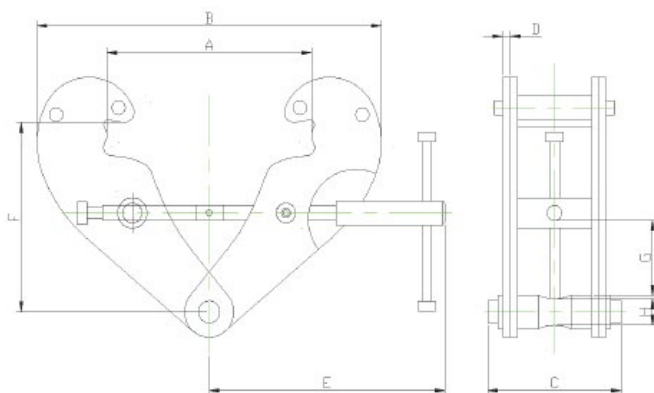
## FEATURES

- All Global models are manufactured to comply with AS4991
- These clamps are used to safely suspend loads in many applications from girders (I-beams)
- Manual, Electric and Air hoist installations are examples of their wide capability of usage
- Quick and easy to install and reposition makes them ideal for maintenance tasks
- Jaws clamp over girder flanges
- Also suitable for lifting I-beams

Imported exclusively for the Global Lifting Group by Pacific Hoists Indent Pty. Ltd.

# SPECIFICATIONS

Model	GLGC100	GLGC200	GLGC300	GLGC500	GLGC10T
Rated Capacity (Kg)	1,000	2,000	3,000	5,000	10,000
Test load (Kg)	1,500	3,000	4,500	7,500	15,000
Beam width range (mm)	80 - 240	80 - 240	90 - 330	90 - 330	90 - 350
Net weight (Kg)	3.5	4.5	9.5	11.0	16.0



# DIMENSIONS

Model	GLGC100	GLGC200	GLGC300	GLGC500	GLGC10T
A (max.)	270	270	355	355	364
B (min. / max.)	183 - 370	183 - 370	243 - 500	243 - 500	269 - 521
C	94	102	132	142	180
D	4	6	8	10	12
E	198	198	263	263	285
F (min. / max.)	100 - 154	100 - 154	148 - 219	148 - 219	165 - 239
G (min.)	22	22	46	43	51
H	20	20	22	28	38